



AM Dual/Mono
AS4004

SYSTEM

OPERATING MANUAL

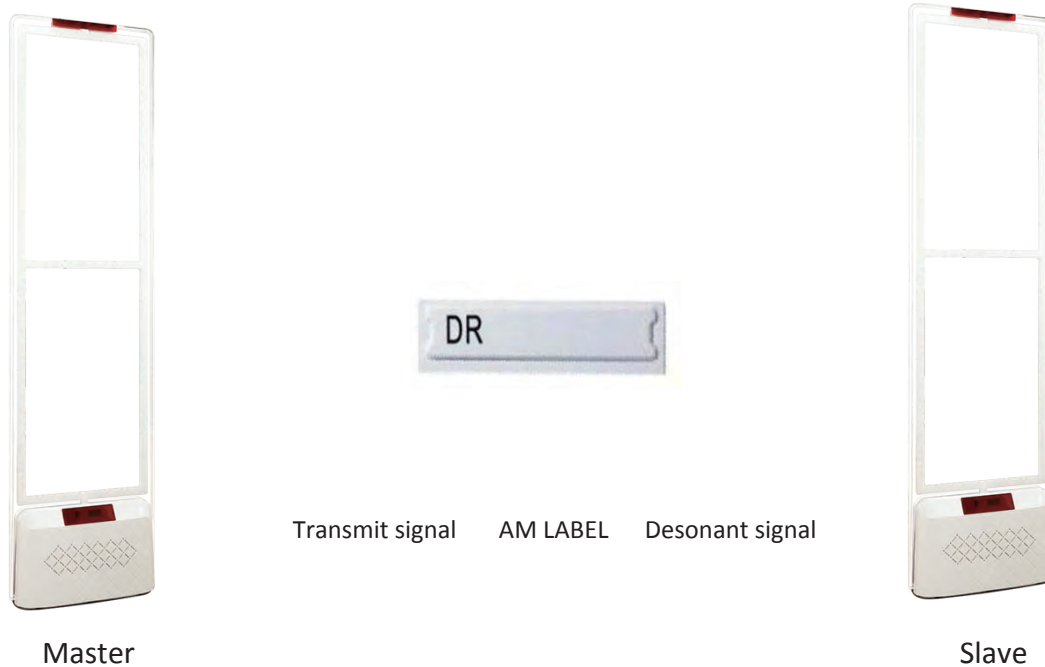


Contents

1. Product profile	3
2. Product structure	4
2.1 AS4004 antenna	4
2.2 AS4004 mainboard	5
3. Installation guide	6
3.1 System configuration	10
3.2 Detecting parameter	10
3.3 Environment requirement	10
3.4 Power requirement	10
3.5 Function test before installation	10
3.6 Fixed antenna	10
3.7 Connection	10
4. Remote debugging system	11
4.1 Remote control instructure	11
4.2 Parameter Table of remote control function	11
4.3 Specification of debug parameters	12
4.4 Debug method	13
5. F.A.Q	15
5.1 Common problem	15
5.2 False alarm	15
5.3 Power supply	16
5.4 Synchronization	16
5.5 Hardware failure	16
6. Common performance and solution of installation	17

1. Product profile

Acutsto magnetic electronic anti-theft system referred to EAS system. Consisted of three main parts: the detection device, sensor tags, deactivator or detector. AM anti-theft systems are single-bit radio frequency identification system, the method of amplitude modulation is using keying (ASK) digital modulation, the modulated signals are coded binary signal, composed by the 0 and 1 single bit sequences. Frequency of carrier signal is 58KHZ, it is low frequency sinusoidal signal. The modulated signal is amplitude modulation ask signal with 100% factor. The basic working principle is to use an antenna to transmit an alternating magnetic field emitted between the transmit and receive antennas to form a sensitive area, using the principle of resonance of electromagnetic waves to search for a valid tag within the detection range (that are the tags which do not through the deactivator), when there is a valid tag, the system will alarm. and magnetic anti-theft system with detection rate is almost zero false positives, not the metal foil shielding, anti-interference ability, wide detection range and other characteristics. Now widely used in the retail stores, supermarkets, clothing boutiques and other places.



AM system working diagram

2. Product structure

2.1 AS4004 antenna

AS4004 antenna is a new intelligent am security system. set detection, computer processing, sound and light alarm in one, transmit, receive, send and receive one of the other mode selection, can be single, double and multi-branch combined installation. The main components are: frame antenna, transmitting and receiving antenna, power supply, transformers, main control board, the resonant radiation plate, the alarm light board, buzzer,etc.



1 -alarm board

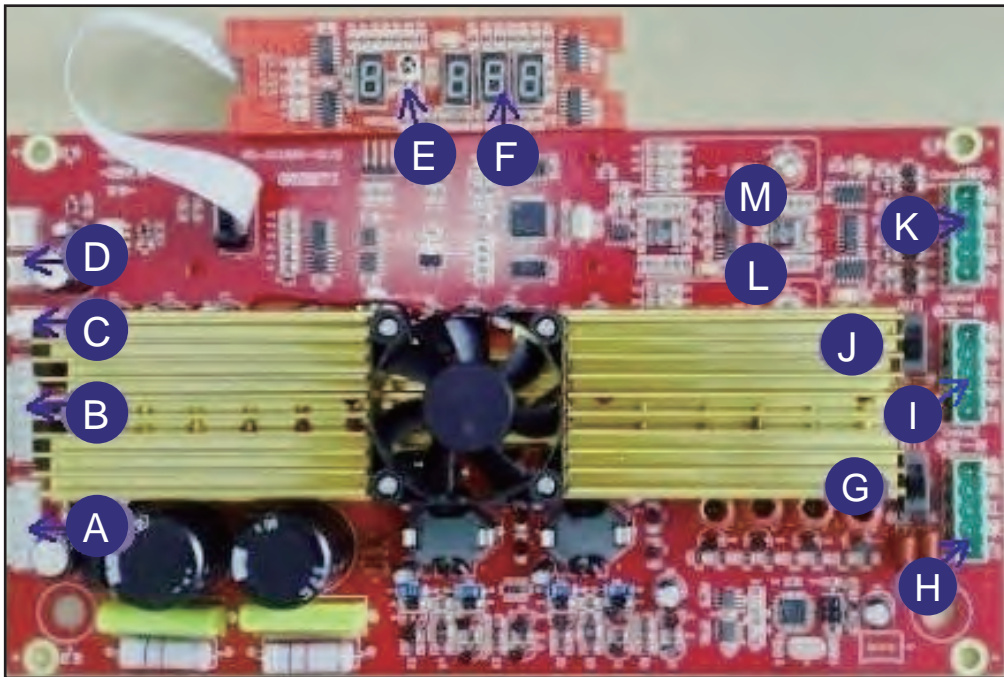
2 -main control board

3 -resonance transmit board

4 -transformer

5 -power supply board

2.2 AS4004 mainboard



A-input port

B-output port

C-alarm buzzer port

D-alarm lamp port

E-remote control receive

F-nixie tube

G-online2 transmit and receive switch

H-online2 transmit and receive in one port

I-online1 transmit and receive in one port

J-online1 transmit and receive switch

K-online1 receive port

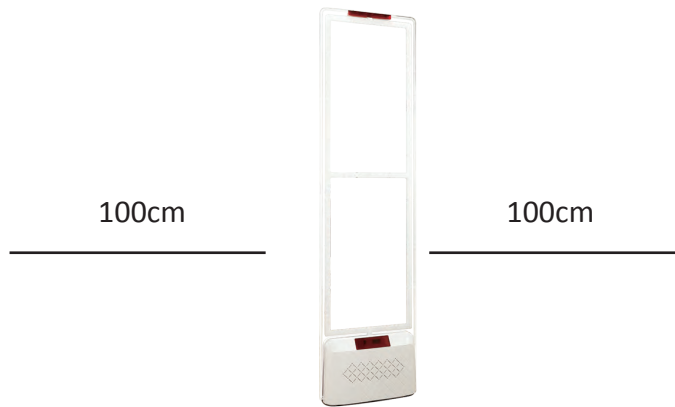
3.Installation guide

(please read this specification carefully before installtion)

3.1 System category configuration :

3.1.1 One master (transmit and recieve in one)

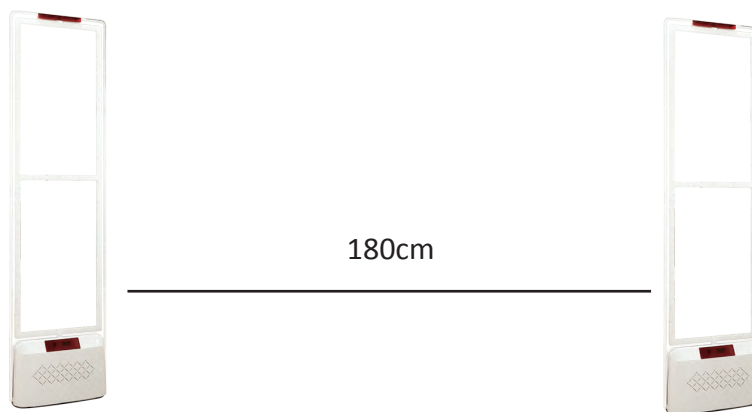
MONO (transmit and receive in one), single antenna testing model, connect the main resonance transmit board to online1 mono, push online1 9transmit and receive switch to mono (transmit and receive in one) , push online2 transmit and receive switch to dual antennas.



Master (MONO =transmit and receive in one)

3.1.2 One Master + one slave (dual antennas)

Dual antennas consisted by mono (one master and one slave), connect he main resonance transmit board to online1 receive port, connect online2 main resonance transmit board to online2 mono (transmit and receive in one)port . Push online1 transmit and receive switch to dual antennas, Push online2 transmit and receive switch to dual antennas. Master receive , online2 slave transmit.

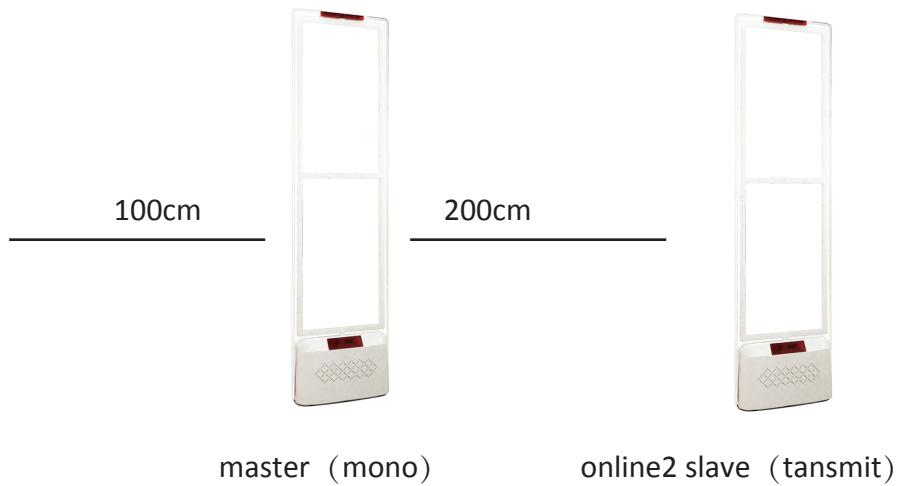


Master (receive)

online2 salve (transmit)

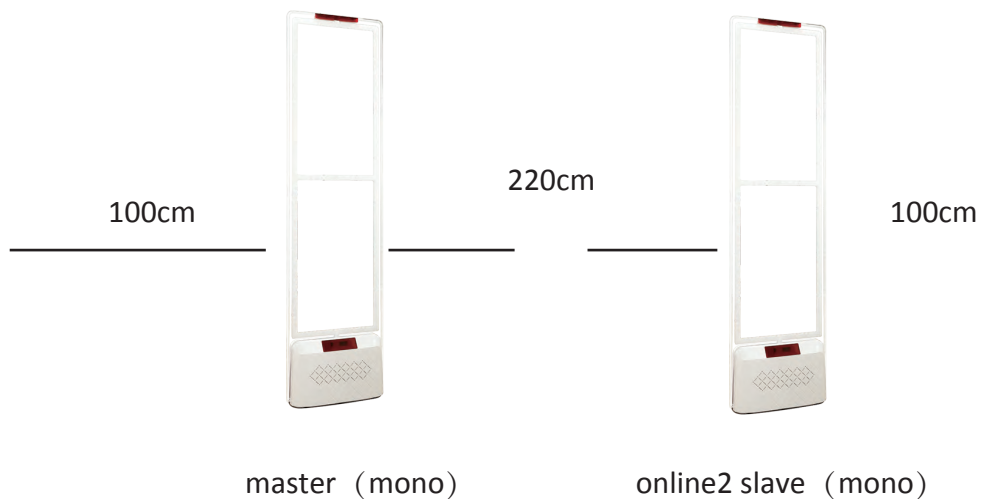
3.1.3 One master + one slave (mono+ online2 slave transmit)

One master + one slave (mono+ online2 slave transmit) , connect the main resonance transmit board to online1 mono port, connect online2 slave resonance transmit board to online2 mono. Push online1 transmit and receive switch to mono, Push online2 transmit and receive switch to dual antennas. Master mono, online2 slave transmit.



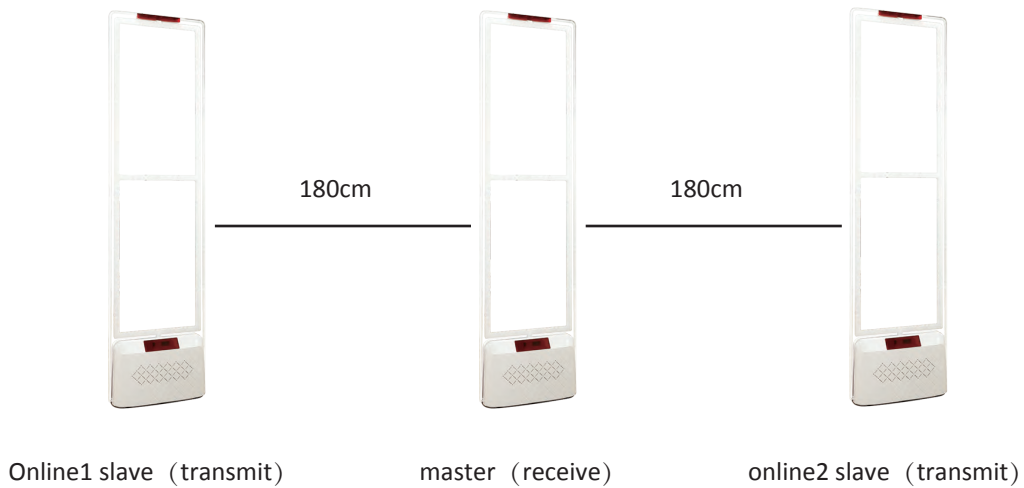
3.1.4 One master + one slave (master mono+ online2 mono)

One master + one slave (master mono+ online2 mono) , connect the main resonance transmit board to online1 mono port, connect online2 slave resonance transmit board to online2 mono. Push online1 transmit and receive switch to mono, Push online2 transmit and receive switch to mono. Master mono, online2 slave mono.



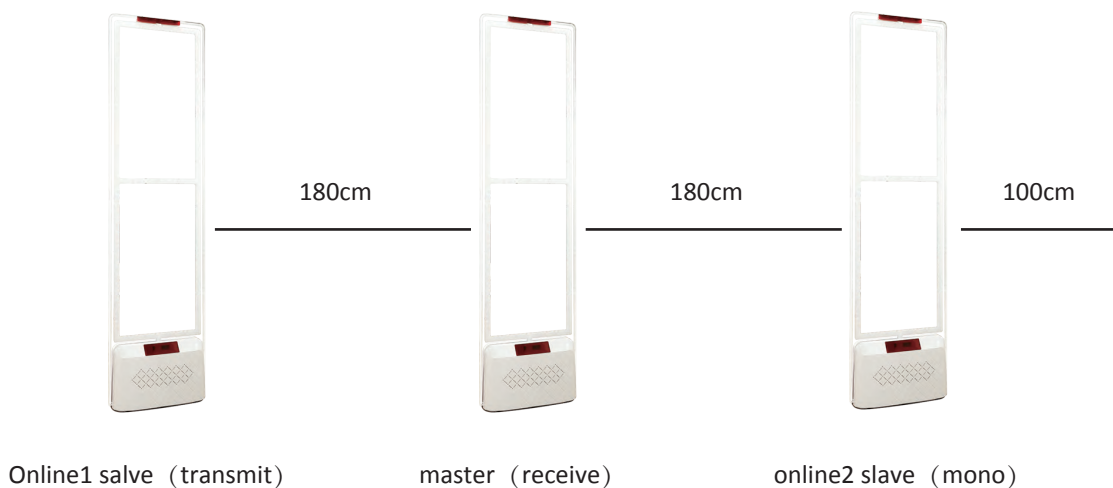
3.1.5 One master + two slave)

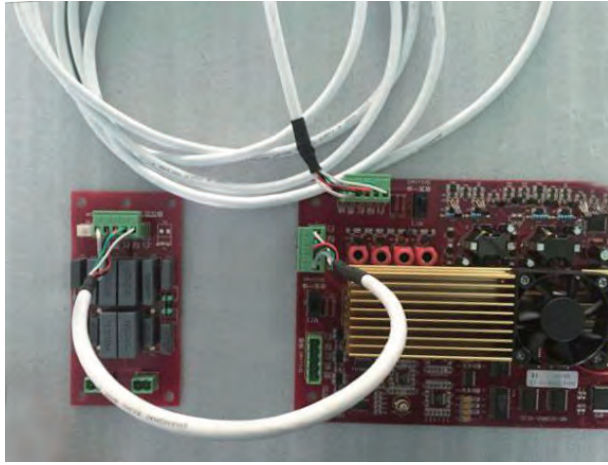
One master + two slave, connect the main resonance transmit board to online1 receive port, connect online1 slave resonance transmit board to online1 mono, connect online2 slave resonance transmit board to online2 mono. Push online1 transmit and receive switch to dual antennas, Push online2 transmit and receive switch to dual antennas, Online1 slave transmit, master receive, online2 slave transmit.



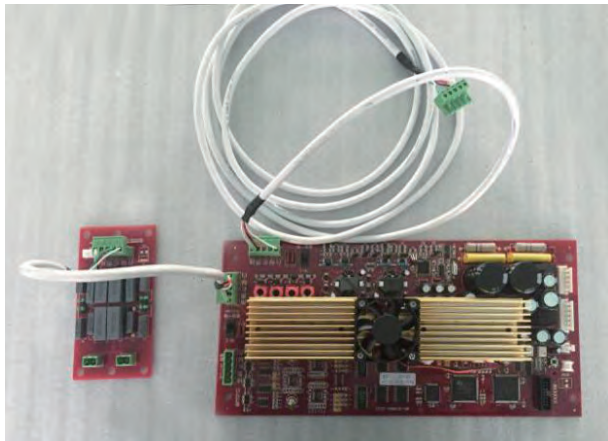
3.1.6 One master+ two slave (online1 slave transmit+master receive+ online2 slave mono)

One master+two slave (online1 slave transmit+master receive+ online2 slave mono) , connect the main resonance transmit board to online1 receive port, connect online1 slave resonance transmit board to online1 mono port, connect online2 slave resonance transmit board to online2 mono. Push online1 transmit and receive switch to dual antennas, Push online2 transmit and receive switch to mono. Online1 slave transmit, master receive, online2 slave Mono.

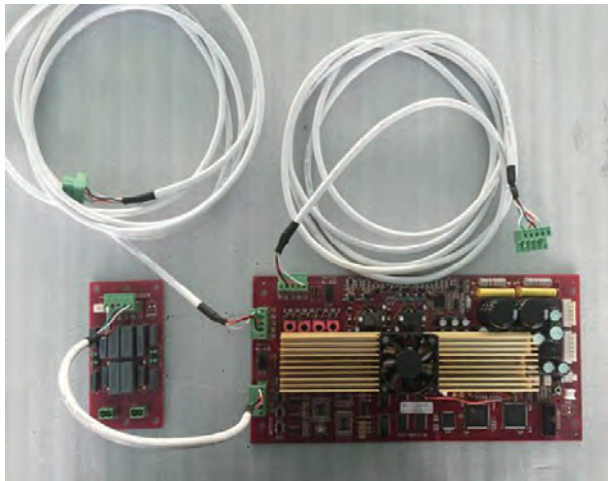




Two Mono



Dual antennas



3 antennas

3.2 Detecting parameter(cm):

Safe mode	Soft label		Hard tag	
	Detection distance	Suggestion distance	Detection distance	Suggestion distance
Mono	60 ~ 80cm	140cm	100 ~ 120cm	200cm
Dual	110 ~ 130cm	120cm	180 ~ 220cm	180cm

Notice :

If soft label and hard tag are used, the installation distance will depends on soft label. The suggestion distance is only for reference,should adjust the distance based on site environment.

3.3 Environment requirement :

1. Ensure there is no large metal objects 2 meters around the antenna,
2. Do not store label or tag near the antenna,
3. Antennas will not be allowed to install near converter-fed high-power equipment.

3.4 Power requirement :

1. Good independent power will be needed, all the antennas should be connected with the same 220VAC wire, firewire and the zero line and the same position, while equipped with safety grounding.
2. Select the wire which not connect with power plant to be the firewire of the system.
3. Generator to provide power and UPS power supply could not be used.

3.5 Function test before installation :

1. Open the package, connect the system as the manual, connect with power supply then check the performance.
2. Keep two antennas in a suitable distance, check the sensitivity.
3. Fix the antennas when the system work well, without hardware problem and no strong interference in the site.

3.6 Fix antenna :

1. Depends on the performance in the site to adjust the distance, install them in a line.
2. Draw the position of the slotting on the ground, then slot.
3. Fix the antennas.

3.7 Connection :

1. Select the power supply, 110VAC or 220VAC,
2. Conenct with power supply.

4. Remote debugging system

4.1 Remote control instructure :

4.1.1 Debugging mode

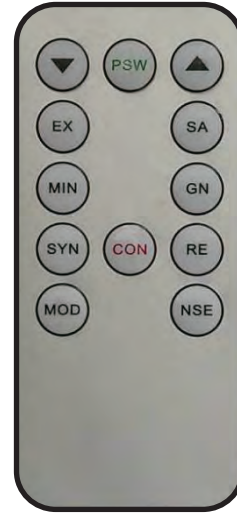
1. Press PSW to enter the password input state,
2. Press ▼ or ▲ to 101,
3. Press CON to enter the system debugging model.

4.1.2 Input parameters with function keys

1. Enter system debugging mode;
2. Press ▼ or ▲ to input a reasonable number;
3. Press CON.

4.1.3 Save setting

1. Press SA;
2. Press ▲ change the number to "1";
3. Press CON.



Remote control panel

4.2 Parameter Table of remote control function :

Button ID	Name	Function fo parameter	Default	Effective range
A	GN	Gain	2	0, 1,2
B	SYN	Synchronization	1	0 to 250
C	RE	Delay	4	0 to 14
H	MIN	Dynamic threshold debugging	40	0 to 200
E	MOD	Parameters invoking mode	0	1, 2
D	NSE	Noise	0	1 to 6
S	SA	Save setting	0	0, 1
	EX	Exit		
	CON	confirm		
	PSW	Enter debugging mode	108	

4.3 Specification of debug parameters :

4.3.1 Dynamic adjusted thresholds(MIN)

Adjust the alarm threshold, detect the noise of the signal. calculate the signal noise energy, continuous automatic control trigger number, so as to effectively determine the presence of the label, the smaller of the number, the higher the sensitivity, but there is risk of false positives if it is too small; if it is too big, sensitivity will not be enough, we should find an optimal operating point between sensitivity and false positives.

4.3.2 Gain(GN)

0 and 1 mode , “0” means Low gain low sensitivity, “1” means high gain high sensitivity.

4.3.3 Receive Delay (RE)

The smaller the number, the better the sensitivity, but if too small. residual oscillation will enter receive, it will lead to false alarm. If too big, the detection signal will be weak, causing lower sensitivity and shorter detection distance.

4.3.4 Synchronization(SYN)

Synchronize all transmitters, please search the synchronization position patiently when each system out of sync , debugging in the whole range of B value step by step, until reach the smallest number of the noise .

4.3.5 Detect noise of the signal(NSE)

- D1 Detect signal strength of receive from the vertical direction。
- D2 Detect signal strength of receive from the horizontal direction.
- D3 Detect signal strength of noise from the vertical direction(average value) .
- D4 Detect signal strength of noise from the horizontal direction(average value).
- D5 Detect signal strength of noise from the vertical direction(instantaneous value).
- D6 Detect signal strength of noise from the horizontal direction (instantaneous value).

D1, D2 NSE is most commonly parameters used for environmental testing. Which reflects the noise environment (detection area no label) but also reflects the signal strength of the detected label (label put to try different positions, different direction detection area), if the label can be made in the detection region D1, D2 value twice noise reading is greater than when there is no label, indicating that this system can detect the position of the label.

4.4 Debug method :

4.4.1 Automatic adjustment method

When not using the remote control transmitter signal, the display shows the number of times already the alarm. If power outage, the number will be automatically cleared, the counting will start again.

4.4.1.1 Use MOD to run a self-test

- Press the MOD to enter the system, enter the mode setting;
- Press ▼ or ▲ to select 2 ;
- Press CON.

Notice: Press CON, will return to 0 .

4.4.1.2 Save the self-test parameter

- Press SA
- Press ▼ or ▲ to select 1 ;
- Press CON.

Note: Wait about 30 seconds, when the motherboard LED 4 lights off, the self-tuning end, begin to work.

4.4.1.3 Detect Self-Test Results

In addition to H value (signal tuning), all parameters can be displayed on self-test, After self-test, H value will be 0 .

4.4.1.4 Check following parameter values

Key	Parameter
GN	Gain adjustment
SYN	Sync adjustment
RE	Receive delay

4.4.1.5 If the problem reserved, adjust the synchronization. SYN

- Gradually adjust the value of the synchronization
- Press SYN enter synchronous adjustment settings
- Press ▼ or ▲ , Progressive scan the entire synchronization range (0-250)
- Press CON

4.4.2 Manual adjustment method

4.4.2.1 Gain adjustment (range: 0-1)

- Press GN;
- Press ▼ or ▲ to select parameter;
- Press CON.

4.4.2.2 Sync adjustment (range: 0-250; Default: 1)

Choose the best value from 0 to 250, it can eliminate the interference between two different systems.

- Press SYN;
- Press ▼ or ▲ to select parameter;
- Press CON to check the noise environment;

Enter this state, when adjust continuously, if see different phases in different noise levels (resolution from the digital display). Adjusting the phase, selecting a better environment to settings.

4.4.2.3 Receiving window delay (range: 0-14)

Input 1-14, the bigger the value, the slower the reaction rate; the smaller the value, the faster the reaction.

- Press RE;
- Press ▼ or ▲ to select parameter;
- Press CON.

4.4.2.4 Noise value display (range: 0-6)

LED lights with digital display noise. Note: If you check the noise value, the alarm snooze, unless you enter 0, exit test status and resume normal alarm.

- Press NES;
- Press ▼ or ▲ to select parameter;
- Press CON.

4.4.2.5 Signal Conditioning (effective range: 0-200)

Increase the value of H can reduce the false alarm rate.

Reduction H value, the system sensitivity will be increased, but there will be risk of false alarms .

- Press MIN ;
- Press ▼ or ▲ to select the parameter;
- Press CON.

4.4.2.6 Mode Selection

When the remote control to enter this state

- Press MOD;
- Press ▼ or ▲ to select parameter ;
- Press CON.

0 initial state (non-functional)

1 run default parameters immediately (factory set parameters)

2 start self-test mode immediately

Note: Do not forget to save all operating parameters before the system is powered down or restarted.

4.4.2.7 SA key

This key will save all current parameters to the memory Lane. Therefore, when the power supply is disconnected parameters will not be lost. When the next time the system is started, will run all parameters from memory.

- Press SA;
- Press ▼ or ▲ to select parameter ;
- Press CON.

4.4.2.8 EX key

Press the EX to return to the alarm display counter status.

5 F.A.Q

5.1 Common problem

5.1.1 Check the power cord and signal cables if has been connected correctly and firmly.

5.1.2 Make sure the power is turned on.

5.1.3 Check the fuse , if damaged, replace the fuse。

5.1.4 Check whether the host is in a dry ventilated place, so as not to board hardware failure due to moisture or water caused.

5.2 False alarm

5.2.1 Large metal object(such as metal cart, lockers, umbrella stand, etc.) near antenna will lead to false alarm.

5.2.2 If there is any 58KHz frequency electronic devices work near antenna, will lead to false alarm.

Common 58KHz electronic equipment are lighting, LED lights, fluorescent lights, printers etc.

5.2.3 Around the antenna non-synchronized sound, and magnetic devices, when sound is not synchronized with other magnetic devices, it is prone to false positive.

5.2.4 Label or hard tag stock near antenna, label and tag on the checkout counter or on the clothing near the antenna will lead to false alarm..

5.2.5 Transmitted signal delay or distortion will lead to false alarm.

5.3 Power supply

5.3.1 AM system must use a separate power supply, because it is synchronous power equipment, other equipments connect with the same the power supply have a greater interference and result in false positives, sensitivity is reduced and other issues.

5.3.2 The power supply must have a good grounding and can be used to filter noise from the power supply to reduce interference.

5.4 Synchronization

Synchronization must of AM system be within a certain range, including the original AM system and AM system newly installed synchronization, and other surrounding AM system synchronization. Since AM system is not allowed when a launch system to another system receives, if the two systems are not synchronized, it will interfere with each other to produce, reduce sensitivity to produce false positive.

1. First check the same phase power supply system is consistent, neutral and FireWire connection can not be mixed.
2. debug synchronization parameter B, search for appropriate synchronization value, so that each system synchronized.

5.5 Hardware failure

When the device fails, can not solve the problem by checking and remote debugging, the device may be a hardware failure.

5.5.1 No power supply: check the fuse is blown or not, the power outlet has power or not.

5.5.2 No transmit signal: Listen to the transmitting antenna carefully if there are pattered softly around whether vibrations at launch, or using an induction electric pen test antenna if there has an electromagnetic field exists, if not it may be emitted motherboard failure.

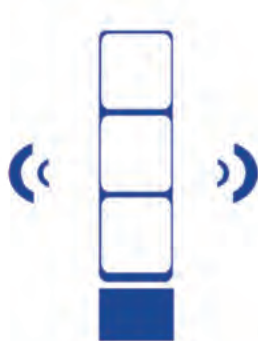
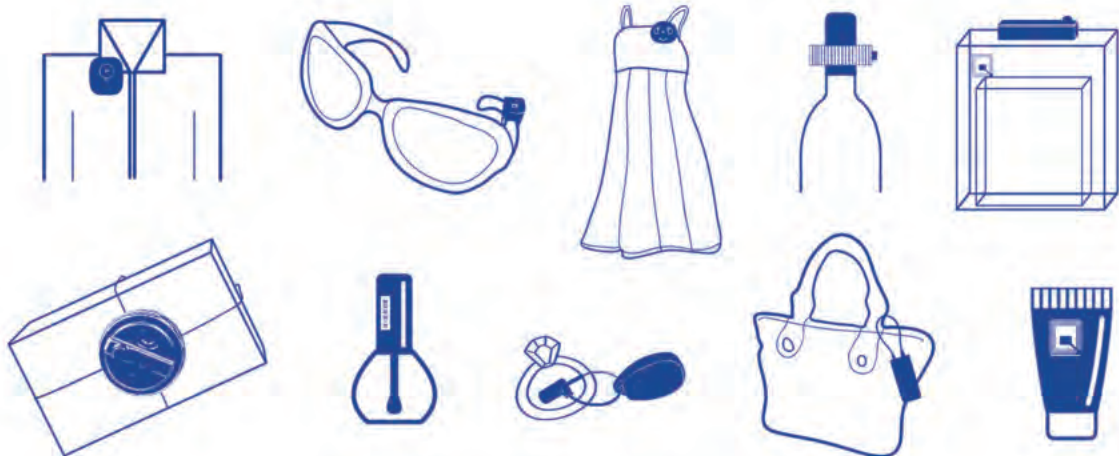
5.5.3 No alarm: Even a good label or tag close to the antnna, will no alarm, check the alarm buzzer and coil terminal.

5.5.4 Warning light panel display garbled: light board cable to ensure there is no break and good contact pressure, normal and stable power supply voltage, or it may be a lamp board failure.

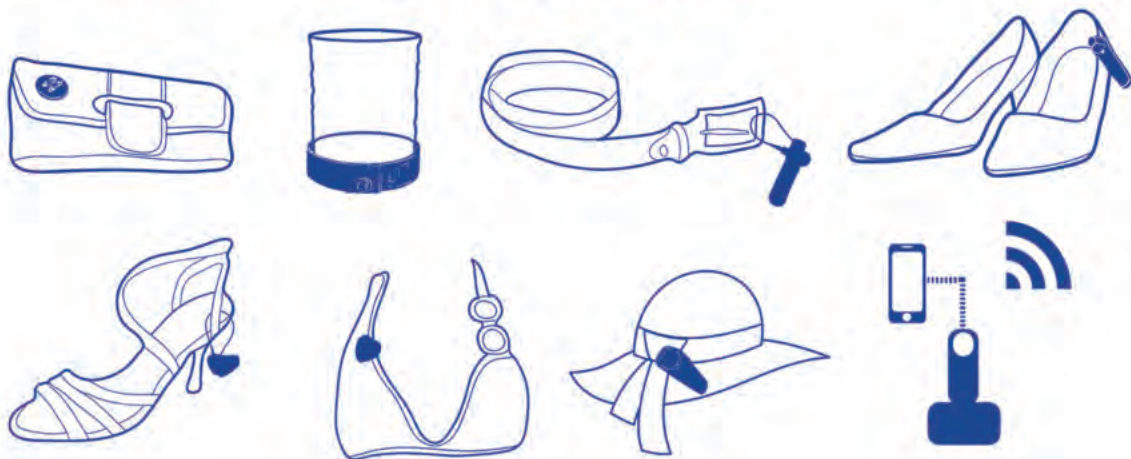
5.5.5 Remote control not working: Check the remote control battery 3V chip power is sufficient, warning lights board cable contact is good, normal power supply voltage is stable, the remote control is pointing at the infrared receiver, or it may be an alarm lamp board or remote control to malfunction.

6.Common performance and solution of installation

Fault category	Performance	Reason	Solution
No alarm	Antenna is connected, not blown fuse, but no power	Check the power supply board found loose plug	Plug the white plug connect the power
	Antenna is connected, the power supply is normal, but not alarm	Due to the strong interference caused antenna automatically blocked	Find the source of interference for the in-store LED lamp interference actions, turn off the LED alarm normal antenna
False alarm	Large metal object near antenna lead to false alarm	Electromagnetic interference signals by reflecting metal objects influence	Remove the large metal object until eliminate false alarm
	There are a large number of antenna near fluorescent lighting and, when turn them on, the antenna false alarm	Frequency of Spotlights and fluorescent starter close to 58KHZ,will influence antenna.	Replace the starter
	Antenna occasional false alarm when no one passing	unexpected interference from power supply or something else	Appropriate to increase the value of MIN and RE
	There are a lot of labels around the antenna in a distance, but still false alarm	Cumulative effect of the tag signal	Move the tags/labels away
	There are other brands of am system near the antenna; leading to false alarms	Co-channel interference	Adjust SYN value patiently until synchronized
Power supply	The noise level is too high, low sensitivity, but also occasional false alarm	Bobble GND	Connect with GND
	Two channels from the same source, a channel with high sensitivity and a channel with sensitivity	Low sensitivity channel reverse the zero line and the fireline	Swap zero line and fireline
Hardware	Antenna almost not alarm , transmit antenna with no	Transmit mainboard	Replace transmit mainboard
	Vibration and Sound blah	damanged	
	Remote control not working, not alarm, light panel power indicator work well	Receiving power board voltage instability	Replace receive mainboard
	Alarm light board garbled, cable connect well	Alarm board malfunction	replace the light board



2018 CATALOG



DRAGON GUARD



Why choose us?



More than 12 years experience

XUZHOU DRAGON GUARD INDUSTRIAL CO.,LTD is a manufacturer specialized in electronic article surveillance(EAS) equipment for more than 10 years. Founded in 2004, with rich experiences in loss prevention field.



Approved many certifications

With global customers like Walmart, Tesco, Carrefour,etc. All the products approved CE, ROHS, SGS, MSDS, and other certifications.



International standard factory

With own factory, which is approx 10,000 square meters, that meet ISO9001 demands. In addition, the factory pass the inspection of many big companies such as Auchan, Home Depot etc.





DRAGON GUARD

Established in 2004, is a high-tech enterprise concentrating on Electronic Article Surveillance (EAS) production, development and sourcing for the global market to reduce retail theft and improve shopping experience.

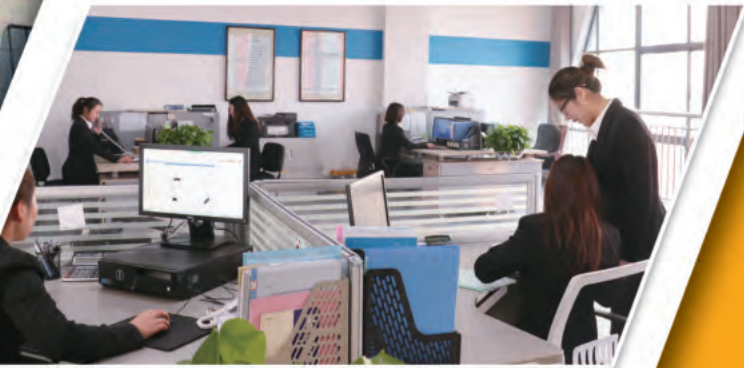
Adopting existing advanced EAS technologies covering RF (Radio Frequency), AM (Acousto Magnetic) and EM (Electro Magnetic), Dragon Guard offers a complete line of EAS products including detection system, hard tag, soft label, safer, bottle tag, milk tag etc. Compatible with international standard and Checkpoint, Gateway, Sensormatic, Shopguard, Gateway, WG, Nedap and other systems.

Dragon Guard products come in a large variety of shapes, sizes, and purposes providing a perfect security protection serving dealers, distributors and end users worldwide. All types of supermarket, library, garment, and retail market etc. , can be secured by Dragon Guard products.

Apart from traditional EAS manufacture and OEM, Dragon Guard also attaches great importance to unique design and new products development. Based on customers' requirements, our professional design and technology team will provide the best products for mutually beneficial cooperation and common development.

At Dragon Guard, commitment to quality is one of our core values. Every employee is responsible for maintaining a high level of quality in everything we do. In order to guarantee that we established a strict QC team to make full inspection before delivery.

You have the freedom to choose high-quality products and the most optimal solution for your clients or yourselves from Dragon Guard. Your satisfaction and mutually sustainable positive development will be our ultimate goal.



ABOUT US



Contents

<i>Part 1</i>	<i>Spider Tag & Alarm Tag</i>	<i>1-01</i>
<i>Part 2</i>	<i>Hard Tag</i>	<i>2-01</i>
<i>Part 3</i>	<i>Pin & Lanyard</i>	<i>3-01</i>
<i>Part 4</i>	<i>Bottle Tag</i>	<i>4-01</i>
<i>Part 5</i>	<i>Baby Formula Security Tag</i>	<i>5-01</i>
<i>Part 6</i>	<i>Safer</i>	<i>6-01</i>
<i>Part 7</i>	<i>Detacher</i>	<i>7-01</i>
<i>Part 8</i>	<i>RF & AM Label</i>	<i>8-01</i>
<i>Part 9</i>	<i>Source Tag</i>	<i>9-01</i>
<i>Part 10</i>	<i>Display Security & Secure Fixture</i>	<i>10-01</i>
<i>Part 11</i>	<i>AM System & Accessories</i>	<i>11-01</i>
<i>Part 12</i>	<i>RF System & Accessories</i>	<i>12-01</i>
<i>Part 13</i>	<i>EM System & Accessories</i>	<i>13-01</i>

“Spider Tag Alarm Tag”



Spider wrap is a kind of anti-theft tag wrapping around the product packaging box, which is applicant for various sizes commodities from big high-grade gifts box to small mobile phone accessories box.

While the alarm tag is more suitable for products with irregular packaging such as shoes, bags and hardware tools.

Both spider tag and alarm tag can be 2 alarm & 3 alarm.





- Lanyard length customized at your option.
- Applicant for plenty merchandise.
- Multiple security assurance.



SW001 BIG SPIDER WRAP (2/3ALARM)

Frequency:8.2MHz/58KHz/
8.2MHz&58KHz
Unit Dimension:72Dia*55mm
Plastic Color:Black,White or Customized
Lock:Magnetic Locking
Lanyard Length:100cm or Customized
Packing Details:200pcs/ctn,
23.0kgs/ctn,58*40*34cm



SW002 SMALL SPIDER WRAP (2ALARM)

Frequency:8.2MHz/58KHz/
8.2MHz&58KHz
Unit Dimension:45Dia*45mm
Plastic Color:Black,White or Customized
Lock:Magnetic Locking
Lanyard Length:60cm or Customized
Packing Details:100pcs/ctn,
5.7kgs/ctn,30*30*23cm



SW004 SPIDER NET (2/3 ALARM)

Frequency:8.2MHz/58KHz/
8.2MHz&58KHz
Unit Dimension:72Dia*55mm
Plastic Color:Black,White or Customized
Lock:Magnetic Locking
Lanyard Length:36cm/72cm or Customized
Packing Details:150pcs/ctn,
21.5kgs/ctn,58*40*34cm

3 Alarm Spider Wrap

- 1.The Spider Wrap will alarm when the lanyard is being cut.
- 2.It will activate the EAS system alarming when carried outside your store.
- 3.The Spider Wrap itself will also alarm when pass through the EAS system.



ALARMING1

ALARMING2



ALARMING2



ALARMING3



AT004 Alarm Tag



AT004 Alarm Tag (2/3 ALARM)

Frequency: RF 8.2MHz/AM 58KHz

Unit Dimension: 50*32*19mm

Plastic Color: Black/White

Lanyard Length: 120mm or Customized

Lock: Magnetic Locking

Packing Details: 200pcs/ctn, 6kgs/ctn, 40*30*20cm



**AT001 ALARM TAG
(2/3 ALARM)**

Frequency:8.2MHz/58KHz
Unit Dimension:83*34*23mm
Plastic Color:Black,White or Customized
Lock:Standard/Super Lock
Lanyard Length:175mm/1500mm/Customized
Packing Details:100pcs/ctn,6kgs/ctn,
38*29*25cm



**AT004 ALARM TAG
(2/3 ALARM)**

Frequency:8.2MHz/58KHz
Unit Dimension:50*32*19mm
Plastic Color:Black,White or Customized
Lock:Standard/Super Lock
Lanyard Length:120mm/Customized
Packing Details:200pcs/ctn,6kgs/ctn,
40*30*20cm



**AT005 ALARM TAG
(2/3 ALARM)**

Frequency:8.2MHz/58KHz
Unit Dimension:89*37*16.5mm
Plastic Color:Black,White or Customized
Lock:Standard/Super Lock
Lanyard Length:175mm/1500mm
/Customized
Packing Details:100pcs/ctn,6kgs/ctn,
38*29*25cm



**AT006 ALARM TAG
(2/3 ALARM)**

Frequency:8.2MHz/58KHz
Unit Dimension:54*40*26mm
Plastic Color:Black,White or Customized
Lock:Standard/Super Lock
Lanyard Length:120mm/Customized
Packing Details:200pcs/ctn,6kgs/ctn,
40*30*20cm



**AP001 ALARM PIN
(2 ALARM)**

Frequency:8.2MHz/58KHz
Unit Dimension:43Dia*21mm
Plastic Color:Grey,White
Pin Length:16/19mm or Customized
Pin Shaft:SmoothPin/GroovedPin

Advantage

- Self-alarm tag is available in 2-alarm and MultiAlarm variants.
- The 2-alarm version will alarm if the lanyard is being cut, and it will activate your EAS system if the alarm tag pass through your store.
- The MultiAlarm version does the same, but the alarm tag itself will also alarm when carried outside your store, following and intimidating the thief.
- For maximum versatility, the alarm tag incorporates dual AM and RF technologies.



***H**ard tag, is one of the most widely used anti-theft products, easy using and reusable, cost-effective, which can be used on clothing, bags, shoes and other different products.*

Hard Tag



Dragon Guard offers a variety of hard tags of Acousto-Magnetic(AM), Radio-Frequency (RF) and RFID technology, also can be customized according to your need.

When a tagged item passes through the anti-theft system at entrance or checkout counter, an alarm sounds warning you that a tagged merchandise is leaving the store without being deactivated or removed at your checkout counter.



T003 MINI ALPHA

Frequency:8.2MHz
 Unit Dimension:50 Dia**26mm
 Plastic Color:Grey,White or Customized
 Lock:Magnetic Locking
 Packing Details:500pcs/ctn,10.0kgs/ctn,
 42*42*14cm



T010 ALPHA

Frequency:8.2MHz
 Unit Dimension:53 Dia**21mm
 Plastic Color:Grey,White or Customized
 Lock:Magnetic Locking
 Packing Details:500pcs/ctn,9.0kgs/ctn,
 59*39*18cm



T034 MINI ROUND

Frequency:8.2MHz
 Unit Dimension:42 Dia**18mm
 Plastic Color:Grey,White or Customized
 Lock:Magnetic Locking
 Packing Details:1000pcs/ctn,9.0kgs/ctn,
 46*32*21cm



T007 SMALL CONE HARD TAG

Frequency:8.2MHz
 Unit Dimension:45 Dia**19mm
 Plastic Color:Grey,White or Customized
 Lock:Magnetic Locking
 Packing Details:1000pcs/ctn,13.0kgs/ctn,
 46*31*22cm



T008 UFO

Frequency:8.2MHz
 Unit Dimension:48 Dia**18mm
 Plastic Color:Grey,White or Customized
 Lock:Magnetic Locking
 Packing Details:1000pcs/ctn,11.0kgs/ctn,
 44*33*24cm



T009 LARGE UFO

Frequency:8.2MHz
 Unit Dimension:62 Dia**19mm
 Plastic Color:Grey,White or Customized
 Lock:Magnetic Locking
 Packing Details:500pcs/ctn,8.0kgs/ctn,
 46*33*23cm



T012 MINI DOME (45MM)

Frequency:8.2MHz
 Unit Dimension:45 Dia**22mm
 Plastic Color:Black,White or Customized
 Lock:Magnetic Locking
 Pin Length:16mm or Customized
 Pin Shaft:Smooth Pin
 Packing Details:1000pcs/ctn,12.5kgs/ctn,
 48*38*20cm



T012 GOLF TAG (53MM)

Frequency:8.2MHz
 Unit Dimension:53 Dia**22mm
 Plastic Color:Black,White or Customized
 Lock:Magnetic Locking
 Pin Length:16mm or Customized
 Pin Shaft:Smooth Pin
 Packing Details:500pcs/ctn,10.0kgs/ctn,
 38*29*24cm



T012 GOLF TAG (63MM)

Frequency:8.2MHz
 Unit Dimension:63 Dia**22mm
 Plastic Color:Black,White or Customized
 Lock:Magnetic Locking
 Pin Length:16mm or Customized
 Pin Shaft:Smooth Pin
 Packing Details:500pcs/ctn,11.0kgs/ctn,
 48*37*22cm



T015 MINI DOME (45MM)

Frequency:8.2MHz/58KHz
Unit Dimension:45 Dia**22mm
Plastic Color:Black,White or Customized
Lock:Magnetic Locking
Pin Length:16mm or Customized
Pin Shaft:Smooth Pin
Packing Details:1000pcs/ctn,12.5kgs/ctn,
48*38*20cm



T015 GOLF TAG (53MM)

Frequency:8.2MHz/58KHz
Unit Dimension:53 Dia**22mm
Plastic Color:Black,White or Customized
Lock:Magnetic Locking
Pin Length:16mm or Customized
Pin Shaft:Smooth Pin
Packing Details:500pcs/ctn,9.8kgs/ctn,
46*32*21cm



T015 GOLF TAG (63MM)

Frequency:8.2MHz/58KHz
Unit Dimension:63 Dia**22mm
Plastic Color:Black,White or Customized
Lock:Magnetic Locking
Pin Length:16mm or Customized
Pin Shaft:Smooth Pin
Packing Details:500pcs/ctn,10.5kgs/ctn,
59*40*15cm



T031 MAGNETIC SAUCER TAG

Frequency:8.2MHz/58KHz
Unit Dimension:50 Dia**22mm
Plastic Color:Black,White or Customized
Lock:Magnetic Locking
Pin Length:16mm or Customized
Pin Shaft:Smooth Pin
Packing Details:1000pcs/ctn,14.6kgs/ctn,
46*36*26cm



T032

Frequency:8.2MHz
Unit Dimension:55 Dia**19.55mm
Plastic Color:Black,White or Customized
Lock:Magnetic Locking
Pin Length:16mm or Customized
Pin Shaft:Smooth Pin
Packing Details:1000pcs/ctn,12.5kgs/ctn,
50*36*23.5cm



T035 R50

Frequency:8.2MHz
Unit Dimension:50 Dia**19mm
Plastic Color:Black,White or Customized
Lock:Magnetic Locking
Packing Details:1000pcs/ctn,10.5kgs/ctn,
50*33*23cm



T042

Frequency:8.2MHz
Unit Dimension:35 Dia' *19mm
Plastic Color:Black,White or Customized
Lock:Magnetic
Packing Details:1000pcs/ctn,7.2kgs/ctn,
40*30*19cm



T045

Frequency:8.2MHz/58KHz
Unit Dimension:50 Dia**19mm
Plastic Color:Black,White or Customized
Lock:Magnetic
Packing Details:1000pcs/ctn,9.3kgs/ctn,
59*40*22cm



T066

Frequency:8.2MHz
Unit Dimension:35 Dia' mm
Plastic Color:Black,White or Customized
Lock:Magnetic Locking
Packing Details:1000pcs/ctn,10.0kgs/ctn,
30*25*18cm



T055 X50

Frequency:8.2MHz
Unit Dimension:50 Dia**22mm
Plastic Color:Black,White or Customized
Lock:Magnetic Locking
Pin Length:16 mm or Customized
Pin Shaft:Smooth Pin
Packing Details:500pcs/ctn,8.0kgs/ctn,
49.5*33*23cm



T055 X40

Frequency:8.2MHz
Unit Dimension:40 Dia**22mm
Plastic Color:Black,White or Customized
Lock:Magnetic Locking
Pin Length:16 mm or Customized
Pin Shaft:Smooth Pin
Packing Details:1000pcs/ctn,12.0kgs/ctn,
58*42.5*19cm



T068

Frequency:8.2MHz/58KHz
Unit Dimension:63 Dia**22mm
Plastic Color:Black,White or Customized
Lock:Magnetic Locking
Pin Length:16mm or Customized
Pin Shaft:Smooth Pin
Packing Details:500pcs/ctn,10.5kgs/ctn,
59*40*15cm



T053 TINY 30

Frequency:8.2MHz
Unit Dimension:34 Dia**23mm
Plastic Color:Black,White or Customized
Lock:Magnetic Locking
Pin Length:16mm or Customized
Pin Shaft:Smooth Pin
Packing Details:1000pcs/ctn,11.0kgs/ctn,
46*31*20cm



T056 PICCO 30

Frequency:8.2MHz
Unit Dimension:30 Dia**21mm
Plastic Color:Black,White or Customized
Lock:Magnetic Locking
Pin Length:16mm or Customized
Pin Shaft:Smooth Pin
Packing Details:1000pcs/ctn,17.0kgs/ctn,
36*30*20cm



T056B PICCO 30

Frequency:8.2MHz
Unit Dimension:33 Dia**24mm
Plastic Color:Black,White or Customized
Lock:Magnetic Locking
Pin Length:16mm or Customized
Pin Shaft:Smooth Pin
Packing Details:1000pcs/ctn,12.0kgs/ctn,
59*40*13cm

APPAREL TAG

T058B



Frequency:58KHz

Unit Dimension:85*19*20mm

Plastic Color:Grey or Customized

Lock:Magnetic Locking

Material:ABS

PackingDetails:

1000pcs/ctn,17.0kgs/ctn,40*30*20cm



T020A

Frequency:8.2MHz/58KHz
 Unit Dimension:61.3*28*25.5mm
 Plastic Color:Black,White or Customized
 Lock:Magnetic Locking
 Packing Details:1000pcs/ctn,15.0kgs/ctn,
 46*28*20cm



T020B

Frequency:8.2MHz/58KHz
 Unit Dimension:61.3*28*25.5mm
 Plastic Color:Black,White or Customized
 Lock:Magnetic Locking
 Packing Details:1000pcs/ctn,15.0kgs/ctn,
 46*28*20cm



T017 PENCIL TAG

Frequency:8.2MHz/58KHz
 Unit Dimension:50*13*20mm
 Plastic Color:Grey or Customized
 Lock:Magnetic Locking
 Packing Details:1000pcs/ctn,13.0kgs/ctn,
 39*30*14cm



T024 BIG PENCIL TAG

Frequency:8.2MHz/58KHz
 Unit Dimension:65*16*18mm
 Plastic Color:Grey or Customized
 Lock:Magnetic Locking
 Packing Details:1000pcs/ctn,9.5kgs/ctn,
 42*42*14cm



T024B

Frequency:58KHz
 Unit Dimension:73*15*19mm
 Plastic Color:Grey or Customized
 Lock:Magnetic Locking
 Packing Details:1000pcs/ctn,12.0kgs/ctn,
 50*31*17cm



T027

Frequency:8.2MHz/58KHz
 Unit Dimension:53*15*19mm
 Plastic Color:Grey or Customized
 Lock:Magnetic Locking
 Packing Details:1000pcs/ctn,12.0kgs/ctn,
 36*25*18cm



T058 APPAREL TAG

Frequency:8.2MHz/58KHz
 Unit Dimension:60*17*20mm
 Plastic Color:Grey or Customized
 Lock:Magnetic Locking
 Packing Details:1000pcs/ctn,10.0kgs/ctn,
 59*40*13cm



T058B BIG APPAREL TAG

Frequency:8.2MHz/58KHz
 Unit Dimension:85*19*20mm
 Plastic Color:Grey or Customized
 Lock:Magnetic Locking
 Packing Details:1000pcs/ctn,17.0kgs/ctn,
 40*30*20cm



T072

Frequency:8.2MHz/58KHz
 Unit Dimension:46*13mm
 Plastic Color:Black,White or Customized
 Lock:Magnetic Locking
 Packing Details:1000pcs/ctn,10.4kgs/ctn,
 40*30*14cm



T016A Mini Pencil Tag (45mm)

Frequency:8.2MHz/58KHz
 Unit Dimension:45*13*19mm
 Plastic Color:Grey or Customized
 Lock:Magnetic Locking
 Packing Details:1000pcs/ctn,8.5kgs/ctn,
 40*29*16cm



T016B mini pencil tag(50mm)

Frequency:8.2MHz/58KHz
 Unit Dimension:51*13*19mm
 Plastic Color:Grey or Customized
 Lock:Magnetic Locking
 Packing Details:1000pcs/ctn,10.0kgs/ctn,
 43*33*21cm



T052 Magnrtic 9kg tack tag

Frequency:58KHz
 Unit Dimension:64*22*20mm
 Plastic Color:Grey or Customized
 Lock:Magnetic Locking
 Packing Details:1000pcs/ctn,9.5kgs/ctn,
 40*28*18cm



T061A SUPER PENCIL TAG

Frequency:8.2MHz/58KHz
 Unit Dimension:60*16*20mm
 Plastic Color:Grey,Black or Customized
 Lock:Magnetic Locking
 Packing Details:1000pcs/ctn,15.0kgs/ctn,
 39*30*18cm



T061B

Frequency:58KHz
 Unit Dimension:62*11*21mm
 Plastic Color:Grey or Customized
 Lock:Magnetic Locking
 Packing Details:1000pcs/ctn,12.0kgs/ctn,
 40*28*20cm



T054 NEW BESTAG

Frequency:58KHz
 Unit Dimension:69*26*21mm
 Plastic Color:Grey or Customized
 Lock:Magnetic Locking
 Packing Details:1000pcs/ctn,14.0kgs/ctn,
 50*21*17cm



T057 FISH TAG

Frequency:8.2MHz/58KHz
 Unit Dimension:58*18*18mm
 Plastic Color:Grey or Customized
 Lock:Magnetic Locking
 Packing Details:1000pcs/ctn,11.0kgs/ctn,
 39*30*14cm



T057 BLUE FISH TAG

Frequency:8.2MHz/58KHz
 Unit Dimension:58*18*18mm
 Plastic Color:Grey or Customized
 Lock:Magnetic Locking
 Packing Details:1000pcs/ctn,11.0kgs/ctn,
 39*30*14cm



T025A SUPER TAG

Frequency:58KHz
 Unit Dimension:88*30*20mm
 Plastic Color:Grey or Customized
 Lock:Compatible with Sensormatic Detacher
 Packing Details:1000pcs/ctn,19.0kgs/ctn,
 48*37*29cm



T025B SUPER TAG

Frequency:58KHz
 Unit Dimension:84*30*19mm
 Plastic Color:Grey or Customized
 Lock:Compatible with Sensormatic Detacher
 Packing Details:1000pcs/ctn,18.0kgs/ctn,
 58*43*19cm



T025C SUPER TAG

Frequency:58KHz
 Unit Dimension:53*30*19mm
 Plastic Color:Grey or Customized
 Lock:Compatible with Sensormatic Detacher
 Packing Details:1000pcs/ctn,13.0kgs/ctn,
 46*31*20cm



T040 SUPER TAG VST

Frequency:58KHz
 Unit Dimension:61*30*17mm
 Plastic Color:Grey,Black or Customized
 Lock:Compatible with Sensormatic Detacher
 Packing Details:1000pcs/ctn,8.5kgs/ctn,
 46*32*21cm



T041

Frequency:58KHz
 Unit Dimension:62*11*21mm
 Plastic Color:Grey or Customized
 Lock:Magnetic Locking
 Packing Details:1000pcs/ctn,12.0kgs/ctn,
 40*28*20cm



T047

Frequency:58KHz
 Unit Dimension:69*30*19mm
 Plastic Color:Grey or Customized
 Lock:Magnetic Locking
 Packing Details:1000pcs/ctn,14.0kgs/ctn,
 44*34*24cm



T006

Frequency:8.2MHz/58KHz
Unit Dimension:55*24*20mm
Plastic Color:Black,White or Customized
Lock:Magnetic Locking
Lanyard Type:Metal Cable
Lanyard Length:90mm or Customized
Packing Details:1000pcs/ctn,14.0kgs/ctn,
37*33*28.4cm



T023A Lanyard Pencil Tag

Frequency:8.2MHz/58KHz
Unit Dimension:46*24*12mm
Plastic Color:Black,White or Customized
Lock:Magnetic Locking
Lanyard Type:Metal Cable
Lanyard Length:90mm or Customized
Packing Details:1000pcs/ctn,9.5kgs/ctn,
39*30*13.5cm



T023B Lanyard Pencil Tag

Frequency:8.2MHz/58KHz
Unit Dimension:55*24*12mm
Plastic Color:Black,White or Customized
Lock:Magnetic Locking
Lanyard Type:Metal Cable
Lanyard Length:90mm or Customized
Packing Details:1000pcs/ctn,11.0kgs/ctn,
43*33*21cm



T038 LANYARD PERAL TAG

Frequency:8.2MHz/58KHz
Unit Dimension:32*30*19mm
Plastic Color:Black,White or Customized
Lock:Magnetic Locking
Lanyard Type:Metal Cable
Lanyard Length:90mm or Customized
Packing Details:1000pcs/ctn,12.0kgs/ctn,
46*32*21cm



T047 WITH LANYARD

Frequency:58KHz
Unit Dimension:75*30*18mm
Plastic Color:Grey or Customized
Lock:Compatible with Sensormatic Detacher
Lanyard Type:Metal Cable
Lanyard Length:90mm or Customized
Packing Details:1000pcs/ctn,12.6kgs/ctn,
50*38*18cm



T052-1 Magnetic 9kg steel Lanyard

Frequency:58KHz
Unit Dimension:64*22*20mm
Plastic Color:Black,White or Customized
Lock:Magnetic Locking
Lanyard Type:Metal Cable
Lanyard Length:90mm or Customized
Packing Details:1000pcs/ctn,11.0kgs/ctn,
43*33*21cm



T071

Frequency:8.2MHz/58KHz
Unit Dimension:69*30*19mm
Plastic Color:Black,White or Customized
Lock:Magnetic Locking
Lanyard Type:Metal Cable
Lanyard Length:90mm or Customized
Packing Details:1000pcs/ctn,9.5kgs/ctn,
39*30*13.5cm



T072 WITH LANYARD

Frequency:8.2MHz/58KHz
Unit Dimension:46*13mm
Plastic Color:Black,White or Customized
Lock:Magnetic Locking
Packing Details:1000pcs/ctn,10.4kgs/ctn,
40*30*14cm



T060

Frequency:8.2MHz/58KHz
 Unit Dimension:48*42*19mm
 Plastic Color:Black,Grey or Customized
 Lock:Magnetic Locking
 Packing Details:1000pcs/ctn,11.0kgs/ctn,
 46*32*21cm



T046 FLOWER TAG

Frequency:8.2MHz
 Unit Dimension:42 Dia' mm
 Plastic Color:Yellow or Customized
 Lock:Magnetic Locking
 Packing Details:1000pcs/ctn,9.5kgs/ctn,
 50*31*17cm



T021 X PENCIL TAG

Frequency:8.2MHz/58KHz
 Unit Dimension:32*30*19mm
 Plastic Color:Black,White or Customized
 Lock:Magnetic Locking
 Packing Details:1000pcs/ctn,11.0kgs/ctn,
 46*32*21cm



T002 SMALL SQUARE TAG

Frequency:8.2MHz
 Unit Dimension:48*42*19mm
 Plastic Color:Black,White or Customized
 Lock:Magnetic Locking
 Packing Details:1000pcs/ctn,11.0kgs/ctn,
 46*32*21cm



T004 LARGE SQUARE TAG

Frequency:8.2MHz
 Unit Dimension:65*55*18mm
 Plastic Color:Black,White or Customized
 Lock:Magnetic Locking
 Packing Details:1000pcs/ctn,15.0kgs/ctn,
 57*39*23cm



T022 CLUTCH TAG

Frequency:58KHz
 Unit Dimension:66*21*20mm
 Plastic Color:Grey,White or Customized
 Lock:Magnetic Locking
 Packing Details:1000pcs/ctn,14.0kgs/ctn,
 46*31*20cm



T036 JEWELLERY TAG

Frequency:8.2MHz/58KHz
 Unit Dimension:37*22*9mm
 Plastic Color:Grey,White or Customized
 Lock:N/A
 Packing Details:1500pcs/ctn,7.5kgs/ctn,
 40*31*16cm



T018 ULTRA GATOR

Frequency:58KHz
 Unit Dimension:96*28*15mm
 Plastic Color:Grey,White or Customized
 Lock:Compatible with Sensormatic Detacher
 Packing Details:1000pcs/ctn,13.5kgs/ctn,
 59*40*19cm



T076 SUNFLOWER TAG

Frequency:8.2MHz
 Unit Dimension:41 Dia**18mm
 Plastic Color:Black,White or Customized
 Lock:Magnetic Locking
 Packing Details:1000pcs/ctn,10.3kgs/ctn



T048A FLAT SQUARE

Frequency:8.2MHz/58KHz
Unit Dimension:53*27*18mm
Plastic Color:Grey,White or Customized
Lock:Magnetic Locking
Packing Details:1000pcs/ctn,8.0kgs/ctn,
42*42*14cm



T048B

Frequency:8.2MHz
Unit Dimension:50*25mm
Plastic Color:Grey,White or Customized
Lock:Magnetic Locking
Packing Details:1000pcs/ctn,8.3kgs/ctn,
40*30*19cm



T050 ECCENTRIC CIRCLE

Frequency:8.2MHz
Unit Dimension:50 Dia**20mm
Plastic Color:Grey,White or Customized
Lock:Compatible with over 16000GS
Super Magnetic
Packing Details:1000pcs/ctn,16.0kgs/ctn,
46*32*36cm



T048C

Frequency:8.2MHz/58KHz
Unit Dimension:50*26*18mm
Plastic Color:Grey,White or Customized
Lock:Magnetic Locking
Packing Details:1000pcs/ctn,7.0kgs/ctn,
42*42*14cm



T048D

Frequency:8.2MHz
Unit Dimension:50*31*17mm
Plastic Color:Grey,White or Customized
Lock:Magnetic Locking
Packing Details:1000pcs/ctn,9.0kgs/ctn,
40*28*20cm



T051 Super Vertical Square

Frequency:8.2MHz/58KHz
Unit Dimension:66*29*21mm
Plastic Color:Black,Grey or Customized
Lock:Compatible with over 16000GS
Super Magnetic
Packing Details:1000pcs/ctn,18.0kgs/ctn,
46*32*36cm



I001 INK PIN

Unit Dimension:55*26*14mm
 Plastic Color:White,Transparent or Customized
 Pin Length:16mm or Customized
 Pin Shaft:Smooth Pin/Grooved Pin
 Packing Details:1000pcs/ctn,6.5kgs/ctn,
 43*43*15cm



I002 INK PIN

Unit Dimension:25 Dia'*8mm
 Plastic Color:Transparent
 Ink Color:Red,Yellow or Customized
 Packing Details:2000pcs/ctn,7.0kgs/ctn,
 40*30*17cm



I007 INK PIN

Unit Dimension:53*28*15mm
 Plastic Color:Grey or Customized
 Pin Shaft:Smooth Pin/Grooved Pin
 Packing Details:1000pcs/ctn,13.0kgs/ctn,
 57*30*30cm



I008 INK PIN

Unit Dimension:42*27*10mm
 Plastic Color:White,Transparent or Customized
 Pin Shaft:Smooth Pin/Grooved Pin
 Packing Details:1000pcs/ctn,6.5kgs/ctn,
 43*43*15cm



I012 INK PIN

Unit Dimension:42*27*10mm
 Plastic Color:White,Transparent or Customized
 Pin Shaft:Smooth Pin/Grooved Pin
 Packing Details:1000pcs/ctn,6.5kgs/ctn,
 43*43*15cm



I016 INK PIN

Unit Dimension:42 Dia'*30mm
 Plastic Color:Beige or Customized
 Pin Shaft:Smooth Pin/Grooved Pin
 Lock:Magnetic Locking
 Packing Details:1000pcs/ctn,10.0kgs/ctn,
 50*33*25cm



I017 INK PIN

Unit Dimension:42*28*10mm
 Plastic Color:White,Transparent or Customized
 Pin Shaft:Smooth Pin/Grooved Pin
 Packing Details:1000pcs/ctn,6.0kgs/ctn,
 59*40*13cm



I018 INK PIN

Unit Dimension:42*28*10mm
 Plastic Color:White,Transparent or Customized
 Pin Shaft:Smooth Pin/Grooved Pin
 Packing Details:1000pcs/ctn,9.0kgs/ctn,
 59*40*13cm



I019 INK PIN

Unit Dimension:42*27*10mm
 Plastic Color:White,Transparent or Customized
 Pin Shaft:Smooth Pin/Grooved Pin
 Packing Details:1000pcs/ctn,6.5kgs/ctn,
 43*43*15cm



I036 INK PIN

Unit Dimension:50 Dia' *24.6mm
 Plastic Color:Transparent
 Ink Color:Red, Yellow or Customized
 Pin Shaft:Smooth Pin/Grooved Pin
 Packing Details:1000pcs/ctn,13.5kg/ctn,
 59*40*22cm



I037 INK PIN

Frequency:8.2MHz
 Unit Dimension:50 Dia' *24.6mm
 Plastic Color:Transparent
 Ink Color:Red, Yellow or Customized
 Pin Shaft:Smooth Pin/Grooved Pin
 Packing Details:1000pcs/ctn,12.0kg/ctn,
 59*40*22cm



I038 INK PIN

Unit Dimension:35 Dia' *24.6mm
 Plastic Color:Transparent
 Ink Color:Red, Yellow or Customized
 Pin Shaft:Smooth Pin/Grooved Pin
 Packing Details:1000pcs/ctn,6.5kg/ctn,
 59*40*22cm



I039 INK PIN

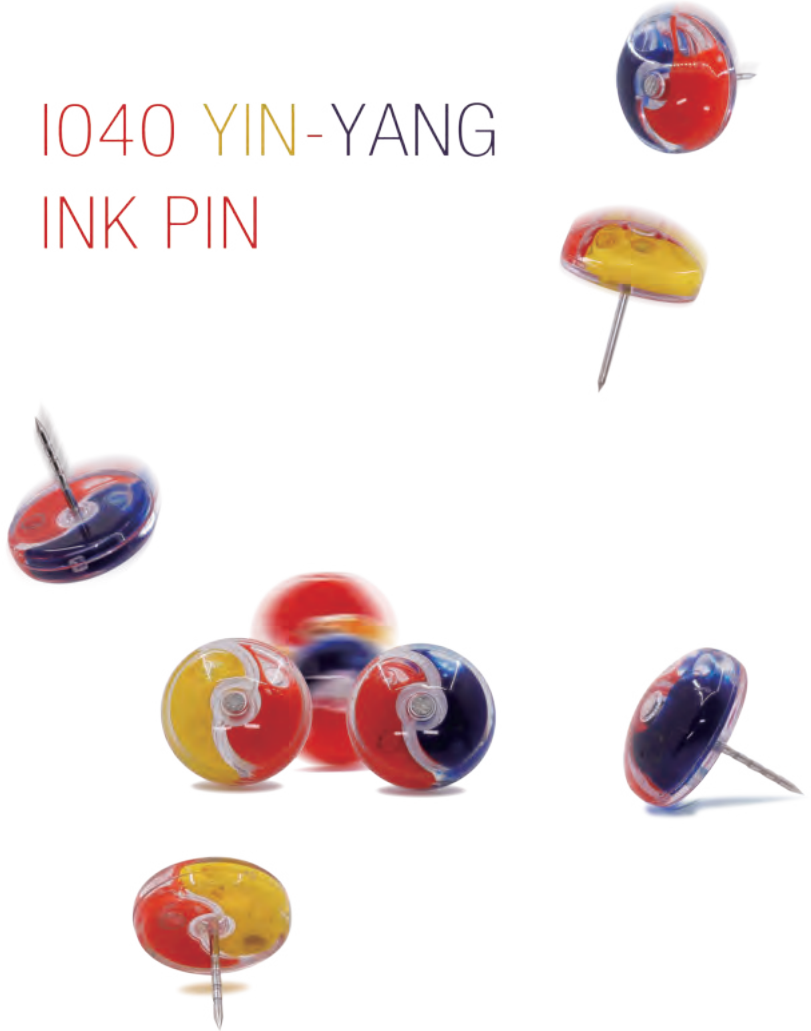
Unit Dimension:16 Dia' *24.2mm
 Plastic Color:Transparent
 Ink Color:Red, Yellow or Customized
 Pin Shaft:Smooth Pin/Grooved Pin
 Packing Details:1000pcs/ctn,15.0kg/ctn,
 53*30*20cm



I040 INK PIN

Unit Dimension:19.75Dia' *22.88mm
 Plastic Color:Transparent
 Ink Color:Red, Yellow or Customized
 Pin Shaft:Smooth Pin/Grooved Pin
 Pin Length:16mm or Customized
 Packing Details:500pcs/box,19*11.7*12cm
 5000pcs/ctn,18.9kg/ctn,59*40*13cm

**I040 YIN-YANG
 INK PIN**





I005 INK TAG

Frequency:8.2MHz/58KHz
 Unit Dimension:42 Dia*30mm
 Plastic Color:Beige or Customized
 Pin Shaft:Smooth Pin/Grooved Pin
 Lock:Magnetic Locking
 Packing Details:1000pcs/ctn,10.0kgs/ctn,
 50*33*25cm



I010 INK TAG

Frequency:8.2MHz/58KHz
 Unit Dimension:50 Dia*25mm
 Plastic Color:Grey,White or Customized
 Lock:Magnetic Locking
 Packing Details:1000pcs/ctn,13.0kgs/ctn,
 40*30*27cm



I011 INK TAG

Frequency:8.2MHz/58KHz
 Unit Dimension:55 Dia*25mm
 Plastic Color:Transparent
 Pin Shaft:Smooth Pin/Grooved Pin
 Lock:Magnetic Locking
 Packing Details:500pcs/ctn,13.0kgs/ctn,
 42*42*18cm



I015 INK TAG

Frequency:8.2MHz/58KHz
 Unit Dimension:55 Dia*25mm
 Plastic Color:Black,White or Customized
 Pin Shaft:Smooth Pin/Grooved Pin
 Lock:Magnetic Locking
 Packing Details:500pcs/ctn,13.0kgs/ctn,
 42*42*18cm



I020 INK TAG

Frequency:8.2MHz
 Unit Dimension:42 Dia*25mm
 Plastic Color:Black,White or Customized
 Pin Shaft:Smooth Pin/Grooved Pin
 Lock:Magnetic Locking
 Packing Details:1000pcs/ctn,13.0kgs/ctn,
 59*40*14cm



I035 INK TAG

Frequency:8.2MHz/58KHz
 Unit Dimension:55 Dia*25mm
 Plastic Color:Black,White or Customized
 Lock:Magnetic Locking
 Packing Details:500pcs/ctn, 10.0kgs/ctn,
 59*40*13cm



T033B BLISTER TAG

Frequency:8.2MHz/58KHz
 Unit Dimension:58*55*24mm
 Plastic Color:Black,Grey or Customized
 Lock:Magnetic Locking
 Pin effective length:16mm or customized
 Pin Shaft:Smooth Pin/Grooved Pin
 Packing Details:500pcs/ctn,8.85kg/ctn,47X31X20cm



T011 BLISTER TAG

Frequency:8.2MHz/58KHz
 Unit Dimension:43*38*22mm
 Plastic Color:Black,Grey or Customized
 Lock:Magnetic Locking
 Pin effective length:16mm or customized
 Pin Shaft:Smooth Pin/Grooved Pin
 Packing Details:1000pcs/ctn,11.0kg/ctn,44X34X20cm



T043 CLAMP TAG

Frequency:8.2MHz/58KHz
 Unit Dimension:68*42*19mm
 Plastic Color:Grey,Black,White or Customized
 Lock:Magnetic Locking
 Packing Details:500pcs/ctn,12.0kgs/ctn,43*32*21cm



T059 BAT TAG

Frequency:8.2MHz/58KHz
 Unit Dimension:62*53*20mm
 Plastic Color:Grey,Black,White or Customized
 Lock:Magnetic Locking
 Packing Details:250pcs/ctn,7.3kgs/ctn,40*30*26cm



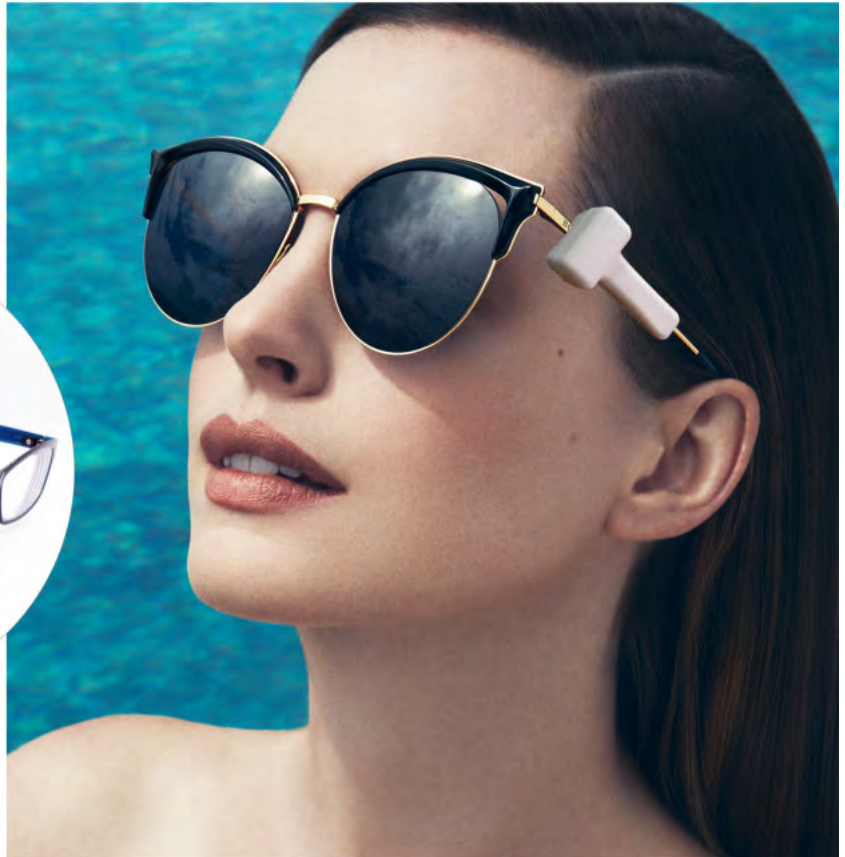
T074

Frequency:8.2MHz/58KHz
 Unit Dimension:54.7*35*25.3mm
 Plastic Color:Grey,Black,White or Customized
 Lock:Magnetic Locking



T075

Unit Dimension:62*30*5mm
 Plastic Color:Black or Customized



My Style, My Optical Tag



O008 Optical Tag

Frequency:8.2MHz/58KHz

Unit Dimension:47*31*27mm

Matched Detacher:D012

Plastic Color:Black,Grey or Customized



“give glasses the best protection”



O001 OPTICAL TAG

Frequency:8.2MHz/58KHz
 Unit Dimension:42*37*26mm
 Plastic Color:Black,Grey or Customized
 Packing Details:250pcs/ctn,20.4kgs/ctn,
 58.5*39*17.5cm



O005 OPTICAL TAG

Frequency:8.2MHz
 Unit Dimension:70.5*15.2*23.3mm
 Plastic Color:Black,Grey or Customized
 Packing Details:1000pcs/ctn,12.0kg/ctn,
 70*15*23cm



O006 OPTICAL TAG

Frequency:8.2MHz/58KHz
 Unit Dimension:25*24*27mm
 Plastic Color:Black,Grey or Customized
 Packing Details:1000pcs/ctn,10.0kgs/ctn,
 46*32*21cm



O007 OPTICAL TAG

Frequency:8.2MHz/58KHz
 Unit Dimension:52.5*31.2*24.5mm
 Matched Detacher:D016
 Plastic Color:Black,Grey or Customized
 Packing Details:1000pcs/ctn,15.0kgs/ctn



O008 OPTICAL TAG

Frequency:8.2MHz/58KHz
 Unit Dimension:47*31*27mm
 Matched Detacher:D012
 Plastic Color:Black,Grey or Customized
 Packing Details:1000pcs/ctn,14.5kgs/ctn,
 59*40*13cm



**O005/O006
 Optical Tag Detacher**

Unit Dimension:95*15mm
 Plastic Color:Black,Grey or Customized
 Packing Details:1000pcs/ctn,10.0kgs/ctn,
 40*30*19cm

“Pin& Lanyard”





*P*in and Lanyard use with tags, fixed tags onto the products which need to be protected. it is an indispensable accessory for tags. For ordinary products, pin is enough, but for bags, Luggage or silk etc. which with high value or easy to damage, in order to avoid damaging goods, it's had better to use lanyard.

According to the material can be divided into plastic pin and metal pin. for the length of pin, it can be customized. The lanyard is durable, it's difficult to damage, thus effectively preventing the theft.



P001 SWIVEL STEEL PIN

Unit Dimension:12 Dia*2.4mm
Material:Steel
Pin Length:16/19 mm or Customized
Pin Shaft:Smooth Pin/Grooved Pin
Packing Details:10000pcs/ctn,17.0kgs/ctn,
34*25*14cm



P002 FLAT STEEL PIN

Unit Dimension:12 Dia*2.4mm
Material:Steel
Pin Length:16/19 mm or Customized
Pin Shaft:Smooth Pin
Packing Details:10000pcs/ctn,17.0kgs/ctn,
34*25*14cm



P003 FLAT STEEL PIN

Unit Dimension:12 Dia*2.4mm
Material:Steel
Pin Length:16/19 mm or Customized
Pin Shaft:Grooved Pin
Packing Details:10000pcs/ctn,17.0kgs/ctn,
34*25*14cm



P004 CONE STEEL PIN

Unit Dimension:14 Dia*8mm
Material:Steel
Pin Length:16/19 mm or Customized
Pin Shaft:Smooth Pin/Grooved Pin
Packing Details:10000pcs/ctn,20.0kgs/ctn,
41*31*20cm



P004 CONE PLASTIC PIN

Unit Dimension:14 Dia*8mm
Material:Plastic
Plastic Color:Grey,White or Customized
Pin Length:16/19 mm or Customized
Pin Shaft:Smooth Pin/Grooved Pin
Packing Details:10000pcs/ctn,8.5kgs/ctn,
41*31*20cm



P005 DOME STEEL PIN

Unit Dimension:15 Dia*8mm
Material:Steel
Pin Length:16/19 mm or Customized
Pin Shaft:Smooth Pin/Grooved Pin
Packing Details:10000pcs/ctn,21.0kgs/ctn,
41*31*20cm



P005 DOME PLASTIC PIN

Unit Dimension:17 Dia*8mm
Material:Plastic
Plastic Color:Grey,White or Customized
Pin Length:16/19 mm or Customized
Pin Shaft: Smooth Pin/Grooved Pin
Packing Details:10000pcs/ctn,9.0kgs/ctn,
41*31*20cm



P007 DOME PLASTIC PIN

Unit Dimension:20 Dia*5mm
Material:Plastic
Plastic Color:Grey,White or Customized
Pin Length:16/19 mm or Customized
Pin Shaft:Super Tag Pin
Packing Details:10000pcs/ctn,11.0kgs/ctn,
57*22*36cm



P009 DOME PLASTIC PIN

Unit Dimension:13 Dia*4mm
Material:Plastic
Plastic Color:Grey,White or Customized
Pin Length:16/19 mm or Customized
Pin Shaft:Super Tag Pin
Packing Details:10000pcs/ctn,6.0kgs/ctn,
34*24*15.5cm



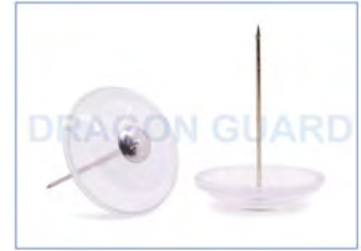
P008 DOME PLASTIC PIN

Unit Dimension:22 Dia**10mm
 Material:Plastic
 Plastic Color:Grey,White or Customized
 Pin Length:16 /19 mm or Customized
 Pin Shaft:Smooth Pin/Grooved Pin
 Packing Details:5000pcs/ctn,20.0kgs/ctn,
 55*35*21cm



CUSTOMIZED LENGTH&MATERIAL

Unit Dimension:Customized
 Material:Steel
 Pin Length:21/27/40mm or Customized
 Pin Shaft:Smooth Pin/Grooved Pin



P010 TRANSPARET PIN

Unit Dimension:30Dia**36mm
 Color:Transparent
 Pin Length:17/36mm or Customized
 Pin Shaft:Smooth Pin/Grooved Pin

LANYARD



L001 LOOP-TO-LOOP

Unit Dimension:1.8mm Dia'
 Color:Black,White or Customized
 Lanyard Type:Metal Cable
 Lanyard Length:175mm or Customized
 Packing Details:10000pcs/ctn,20.0kgs/ctn,
 43*34*21cm



L002 LOOP-TO-PIN

Unit Dimension:1.8mm Dia'
 Color: Black,White or Customized
 Lanyard Type:Metal Cable
 Lanyard Length:175mm or Customized
 Packing Details:10000pcs/ctn,20.0kgs/ctn,
 43*34*21cm



L003 POINT WELDING

Unit Dimension:1.2mm Dia'
 Lanyard Type:Metal Cable
 Lanyard Length:175mm or Customized
 Packing Details:10000pcs/ctn,14.3kgs/ctn,
 39*22*12cm



L004 EYE-TO-LOOP

Unit Dimension:1.8mm Dia'
 Lanyard Type:Metal Cable
 Lanyard Length:230mm or Customized
 Packing Details:2500pcs/ctn,11.0kgs/ctn,
 54*38*18cm



L005 LOCK LANYARD

Unit Dimension: 7.8 Dia**15mm,1.3mm Dia'
 Plastic Color:White or Customized
 Lanyard Type:Metal Cable
 Lanyard Length:95mm or Customized
 Lanyard Color:Black,White or Customized



L006 LOOP-TO-PIN

Color: Black,White or Customized
 Lanyard Type:Metal Cable
 Lanyard Length:150mm or Customized

BOTTLE TAG

*D*ifferent kinds of bottle tag have their own advantage. The length of bottle tag with lanyard can be adjusted to lock different sizes of bottle. Also cost less.

Bottle cap can prevent stealing drink, looks pretty.

Bottle tags are widely used in supermarket, wine store, etc.







B001 BOTTLE TAG WITH METAL CABLE

Frequency:8.2MHz/58KHz
 Unit Dimension:50 Dia*33mm
 Plastic Color:Black,White or Customized
 Lock:Magnetic Locking
 Lanyard Type:Metal Cable
 Lanyard Length:175mm or Customized
 Packing Details:300pcs/ctn,7.5kgs/ctn,
 42*32*21cm



B002 BOTTLE TAG WITH METAL CABLE

Frequency:8.2MHz
 Unit Dimension:47*42*19mm
 Plastic Color:Black,White or Customized
 Lock:Magnetic Locking
 Lanyard Type:Metal Cable
 Lanyard Length:175mm or Customized
 Packing Details:1000pcs/ctn,14.0kgs/ctn,
 42*32*32cm



B003 BOTTLE TAG

Frequency:8.2MHz/58KHz
 Unit Dimension:Inner size 50 Dia'mm
 Out Size:35 Dia'mm High 21mm
 Material:PC
 Plastic Color:Grey,White or Customized
 Lock:Magnetic Locking
 Packing Details:500pcs/ctn,13.0kgs/ctn,
 37*31*24cm



B004 BOTTLE TAG WITH METAL CABLE

Frequency:8.2MHz/58KHz
 Unit Dimension:36*30*33mm
 Plastic Color:Grey,White or Customized
 Lock:Magnetic Locking
 Lanyard Type:Metal Cable
 Lanyard Length:175mm or Customized
 Packing Details:500pcs/ctn,11.5kgs/ctn,
 46*32*21cm



B008 BOTTLE TAG WITH PLASTIC CABLE

Frequency:8.2MHz
 Unit Dimension:47*42*19mm
 Plastic Color:Grey,White or Customized
 Lock:Magnetic Locking
 Lanyard Type:PA+Steel Ribbon
 Lanyard Length:160mm



B009 BOTTLE TAG WITH PLASTIC CABLE

Frequency:8.2MHz/58KHz
 Unit Dimension:50 Dia*33mm
 Plastic Color:Black,White or Customized
 Lock:Magnetic Locking
 Lanyard Type:PA+Steel Ribbon
 Lanyard Length:160mm
 Packing Details:500pcs/ctn,11.0kgs/ctn,
 42*32*32cm



B010 BOTTLE TAG WITH PLASTIC CABLE

Frequency:8.2MHz/58KHz
 Unit Dimension:37*30*36mm
 Plastic Color:Grey,White or Customized
 Lock:Magnetic Locking
 Lanyard Type:PA+Steel Ribbon
 Lanyard Length:160mm
 Packing Details:500pcs/ctn,12.0kgs/ctn,
 40*30*28cm



B011 BOTTLE CAP

Frequency:8.2MHz/58KHz
 Unit Dimension:Inner size 33mm Dia'
 Outer size:54mm Dia' High 44mm
 Material:ABS+PC
 Lock:Magnetic Locking
 Packing Details:300pcs/ctn,13.0kgs/ctn,
 42*32*32cm



B012 BOTTLE CAP

Frequency:8.2MHz/58KHz
 Unit Dimension:Inner size 41.5mm Dia'
 Outer size:43.5mm Dia' High 80mm
 Material:ABS+PC
 Lock:Magnetic Locking
 Packing Details:300pcs/ctn,14.0kgs/ctn,
 58*40*34cm



B005 CUP TAG

Frequency:8.2MHz/58KHz
 Unit Dimension:307*48.5*40mm
 Lock: Standard/Super≥200N
 Range Of Application:Φ64-70mm
 Packing Details:200pcs/ctn,8.7kgs/ctn,
 43*36*26cm



B005 CUP TAG



B015 BOTTLE CAP

Frequency:8.2MHz/58KHz
 Unit Dimension:Inner size 37mm Dia'
 Outer size 56mm Dia' High 60mm
 Material:PC
 Lock:Magnetic Locking
 Packing Details:300pcs/ctn,14.0kgs/ctn,
 58*40*34cm



B015 BOTTLE CAP



B018

Frequency:8.2MHz/58KHz
 Unit Dimension:Inner size 35mm Dia'
 Outer size:61mm Dia' High 59mm
 Material:ABS
 Lock:Magnetic Locking
 Packing Details:250pcs/ctn, 15.6kgs/ctn,
 45*32*32.5cm



B018



B019 BOTTLE LOX

Frequency:8.2MHz/58KHz
 Unit Dimension:Inner size 39mm Dia'
 Outer size 43mm Dia' High 61mm
 Material:ABS+PC
 Lock:Magnetic Locking



B019 BOTTLE LOX

“BABY FORMULA MILK POWDER SECURITY TAG”



Milk powder has small size but high price,so it has been a high rate of theft in the store.

In particular,we have designed a variety of anti-theft buckle and anti-theft base for canned products.

Products covered by the disposable/reuseable CanGrip,Milk Tag with metal Cable,Alarm Milk Powder etc.

It provided a good anti-theft protection for common canned goods on the market (especially the milk powder)





What are the benefits of using milk powder Security Tag?

- Compatible with common milk powder cans
- Easily Removable & Fast Installation
- Keep your product elegant & Never damage to the product surface
- Hardness Surface & Delicate Shape & Easy Fixed & Firm Standing
- Publicize your brand clearly & Never cover the product message and manufacturing date

HOW TO USE?



Place can upward



Push to lock



To detacher



MS001 ROUND MILK TAG

Frequency:8.2MHz/58KHz or Customized
Unit Dimension:50 Dia**33mm
Plastic Color:Black,White or Customized
Lock:Magnetic Locking
Lanyard Type:Metal Cable
Lanyard Length:480mm or Customized
Packing Details:300pcs/ctn,11.0kgs/ctn
50*33*23cm



MS002 TRIANGLE MILK TAG

Frequency:8.2MHz/58KHz or Customized
Unit Dimension:36*30*33mm
Plastic Color:Grey,White or Customized
Lock:Magnetic Locking
Lanyard Type:Metal Cable
Lanyard Length:480mm or Customized
Packing Details:300pcs/ctn,10.0kgs/ctn
50*33*23cm



MS007 Small Square Milk Tag

Frequency:8.2MHz
Unit Dimension:42 Dia**18mm
Plastic Color:Grey,White or Customized
Lock:Magnetic Locking
Packing Details:1000pcs/ctn,9.0kgs/ctn,
46*32*21cm



MS003 CANGRIP

Frequency:8.2MHz/58KHz/8.2MHz&58KHz
Unit Dimension:102 Dia**35mm
Applications:Formular,Coffee and Cans.
Lock:Magnetic Locking
Plastic Color:Grey or Customized
Packing Details:150pcs/ctn,15.5kgs/ctn,
58*40*34cm



MS004 CANGRIP

Frequency:8.2MHz/58KHz/8.2MHz&58KHz
Unit Dimension:128 Dia**35mm
Applications:Formula,Coffee and Cans
Lock:Magnetic Locking
Plastic Color:Grey or Customized
Packing Details:60pcs/ctn,8.0kgs/ctn,
58*42.5*19cm



MS005 CANGRIP

Frequency:8.2MHz/58KHz/8.2MHz&58KHz
Unit Dimension:187 Dia**35mm
Applications:Formula,Coffee and Cans
Lock:Magnetic Locking
Plastic Color:Grey or Customized



MS009 TOP CANGRIP

Frequency:8.2MHz
Unit Dimension:45 Dia**22mm
Plastic Color:Black,White or Customized
Lock:Magnetic Locking
Pin Length:16mm or Customized
Pin Shaft:Smooth Pin
Packing Details:1000pcs/ctn,12.5kgs/ctn,
48*38*20cm



MS010 TOP CANGRIP

Frequency:8.2MHz
Unit Dimension:53 Dia**22mm
Plastic Color:Black,White or Customized
Lock:Magnetic Locking
Pin Length:16mm or Customized
Pin Shaft:Smooth Pin
Packing Details:500pcs/ctn,10.0kgs/ctn,
38*29*24cm



**MS006A Milk Powder Protector
MS006B Multi-Alarm Milk Powder Protector**

Frequency:8.2MHz/58KHz/8.2MHz&58KHz
Unit Dimension:137 Dia**72mm
Lanyard Length:200mm or Customized
Applications:Formula,Coffee and Cans
Lock:Magnetic Locking
Plastic Color:Grey or Customized
Packing Details:72pcs/ctn,15.5kgs/ctn,
58*40*34cm



Walmart's Choice



Disposabile CanGrip

Suitable for 400g/800g

Frequency: 58KHz

Unit Dimension:104 Dia'*14mm(MS008A)

132 Dia'*14mm(MS008B)

Applications:Formular,Coffee and Cans.

Plastic Color:Grey or Customized

Packing Details:400pcs/ctn,4.5kgs/ctn,44*44*28cm(MS008A)

400pcs/ctn,10.7kgs/ctn,55.5*55.5*28cm(MS008B)



"Only choose the right"

SAFER



Safer box provides a high level of protection, with strong PC shell, good transparency, easy to secure and detach, which not only enhance the consumption experience, but also protect commodities effectively. Safer can be used for many commodities such as perfume, razor, cosmetic, CD/DVD, or battery etc. Easy to secure and detach.



Cosmetic Safer



S016 MULTIFUNCTION SAFER

Frequency:8.2MHz/58KHz
 Internal Dimension:(H*W*D)
 200*150*50mm/7.87*5.91*1.97 in.
 Material:PC+ABS
 Lock:Slide-open Magnetic Locking
 Packing Details:50pcs/ctn,16.0kgs/ctn,
 63*45*40cm



S020 MULTIFUNCTION SAFER

Frequency:8.2MHz/58KHz
 Internal Dimension:(H*W*D)
 161*151*40mm/6.34*5.95*1.58 in.
 Material:PC+ABS
 Lock:Slide-open Magnetic Locking
 Packing Details:50pcs/ctn,12.8kgs/ctn,
 58*40*34cm



S023 COSMETIC SAFER

Frequency:8.2MHz/58KHz
 Internal Dimension:(H*W*D)
 150*120*45mm/5.91*4.72*1.77 in.
 Material:PC+ABS
 Lock:Slide-open Magnetic Locking
 Packing Details:50pcs/ctn,11.5kgs/ctn,
 45*38*50cm



S024 Razor Safer

THE BEST YOU CAN GET



Frequency:8.2MHz/58KHz

Material:ABS+PC

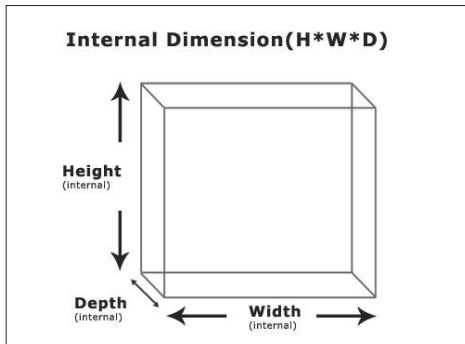
Internal Dimension(H*W*D):120*110*40 mm

4.72*4.33*1.57 in.

Lock:Magnetic Locking

Packing Details:100pcs/ctn,18.0kg/ctn

54*43*37cm



S024 RAZOR SAFER

Frequency:8.2MHz/58KHz
 Internal Dimension:(H*W*D)
 120*110*40mm/4.72*4.33*1.57 in.
 Material:PC+ABS
 Lock:Slide-open Magnetic Locking
 Packing Details:84pcs/ctn,14.5kgs/ctn,
 58*40*34cm



S025 COSMETIC SAFER

Frequency:8.2MHz/58KHz
 Internal Dimension:(H*W*D)
 170*135*55mm/6.69*5.31*2.17 in.
 Material:PC+ABS
 Lock:Slide-open Magnetic Locking
 Packing Details:50pcs/ctn,13.5kgs/ctn,
 52*45*56cm



S026 COSMETIC SAFER

Frequency:8.2MHz/58KHz
 Internal Dimension:(H*W*D)
 225*115*65mm/8.86*4.53*2.56 in.
 Material:PC+ABS
 Lock:Slide-open Magnetic Locking
 Packing details:50pcs/ctn,19.0kgs/ctn,
 54*38*64cm



S027 RAZOR SAFER

Frequency:8.2MHz/58KHz
 Internal Dimension:(H*W*D)
 120*110*30mm/4.72*4.33*1.18 in.
 Material:PC+ABS
 Lock:Slide-open Magnetic Locking
 Packing Details:100pcs/ctn,14.0kgs/ctn,
 53*30*43cm



S033 PSP/PS VITA SAFER

Frequency:8.2MHz/58KHz
 Internal Dimension:(H*W*D)
 178*105*15mm/7.01*4.13*0.59 in.
 Material:PC+ABS
 Lock:Slide-open Magnetic Locking
 Packing Details:50pcs/ctn,8.0kgs/ctn,
 43*26*25cm



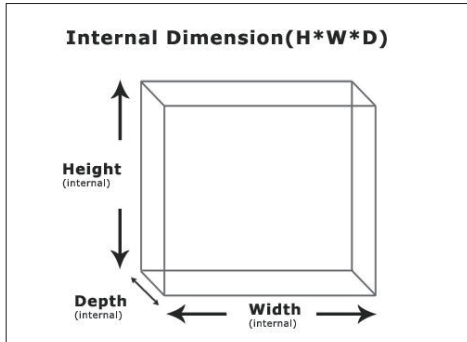
S034 COSMETIC SAFER

Frequency:8.2MHz/58KHz
 Internal Dimension:(H*W*D)
 102*125*70mm/4.02*4.92*2.76 in.
 Material:PC+ABS
 Lock:Slide-open Magnetic Locking

S043 Single&Double Ink Cartridges Safer



RETAIL SOLUTIONS:
Reduce shoplifting, Quick application, Loss prevention and increase profit.



S035 SINGLE & DOUBLE INK CARTRIDGES SAFER

Frequency:8.2MHz/58KHz
Internal Dimension:(H*W*D)
125*125*70mm/4.92*4.92*2.76 in.
Material:PC+ABS
Lock:Slide-open Magnetic Locking
Packing Details:42pcs/ctn,11.0kgs/ctn,
58*40*34cm



S036 COSMETIC SAFER

Frequency:8.2MHz/58KHz
Internal Dimension:(H*W*D)
168*134*55mm/6.61*5.28*2.17 in.
Material:PC+ABS
Lock:Slide-open Magnetic Locking



S041 COSMETIC SAFER

Frequency:8.2MHz/58KHz
Internal Dimension:(H*W*D)
92*70*70mm/3.62*2.76*2.76 in.
Material:PC+ABS
Lock:Magnetic Locking
Packing Details:100pcs/ctn,13.5kgs/ctn,
44*41*41cm



S042 COSMETIC SAFER

Frequency:8.2MHz/58KHz
Internal Dimension:(H*W*D)
192*69*69mm/7.56*2.72*2.72 in.
Material:PC+ABS
Lock:Magnetic Locking
Packing Details:50pcs/ctn,12.0kgs/ctn,
45*41*46cm



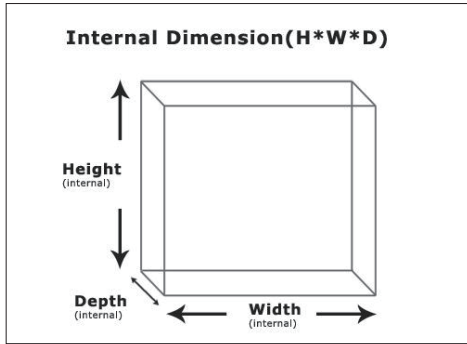
S043 INK CARTRIDGE SAFER

Frequency:8.2MHz/58KHz
Internal Dimension:(H*W*D)
125*125*50mm/ 5*1.96*4.92 in.
Material:PC+ABS
Lock:Magnetic Locking
Packing Details:54pcs/ctn,11.5kgs/ctn,
58*40*34cm



S044 TOOTHPASTE SAFER

Frequency:8.2MHz/58KHz
Internal Dimension:(H*W*D)
247*60*50mm/9.72* 2.36*1.97 in.
Material:PC+ABS
Lock:Magnetic Locking
Packing Details:60pcs/ctn,14kgs/ctn,
53*43*36cm



S045 COSMETIC SAFER

Frequency:8.2MHz/58KHz
 Internal Dimension:(H*W*D)
 140*73*52mm/5.5* 2.87*2.05 in.
 Material:PC+ABS
 Lock:Magnetic Locking
 Packing Details:100pcs/ctn,14.5kg/ctn,
 62*45*40cm



S046 COSMETIC SAFER

Frequency:8.2MHz/58KHz
 Internal Dimension:(H*W*D)
 168*134*55mm/6.61*5.28*2.17 in.
 Material:PC+ABS
 Lock:Slide-open Magnetic Locking



S050

Frequency:8.2MHz/58KHz
 Internal Dimension:(H*W*D)
 204*155*84mm/8.03* 6.10*3.31 in.
 Material:PC+ABS
 Lock:Magnetic Locking
 Packing Details:20pcs/ctn,8.0kgs/ctn
 42*25*26cm



S051

Frequency:8.2MHz/58KHz
 Internal Dimension:(H*W*D)
 200*110*85mm/7.87* 4.33*3.35 in.
 Material:PC+ABS
 Lock:Magnetic Locking
 Packing Details:50pcs/ctn,15.0kgs/ctn
 53*46*36cm



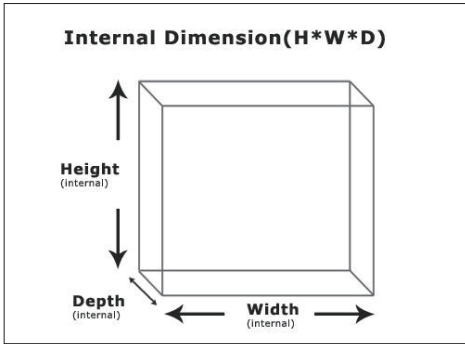
S052 WET WIPES SAFER

Frequency:8.2MHz/58KHz
 Internal Dimension:(H*W*D)
 240*140*50mm/9.45* 5.51*1.97 in.
 Material:PC+ABS
 Lock:Magnetic Locking
 Packing Details:50pcs/ctn,17.0kgs/ctn
 53*51*45.5cm



S053 VACUUM CUP SAFER

Frequency:8.2MHz/58KHz
 Internal Dimension:(H*W*D)
 250*100*100mm/9.84* 3.94*3.94 in.
 Material:PC+ABS
 Lock:Magnetic Locking
 Packing Details:30pcs/ctn,19.0kgs/ctn
 58*40.5*54cm



S054 NEW TOOTHPASTE SAFER

Frequency:8.2MHz/58KHz
 Internal Dimension:(H*W*D)
 250*75*65mm/9.84* 2.95*2.56 in.
 Material:PC+ABS
 Lock:Magnetic Locking
 Packing Details:50pcs/ctn,11.7kgs/ctn
 53*51.5*45.5cm



S055

Frequency:8.2MHz/58KHz
 Material:PC+ABS
 Lock:Magnetic Locking



S056

Frequency:8.2MHz/58KHz
 Internal Dimension:(H*W*D)
 155*110*85mm/ 6.1*4.33*3.35 in.
 Material:PC+ABS
 Lock:Magnetic Locking
 Packing Details:50pcs/ctn,14.0kgs/ctn
 58*44*37cm



S057

Frequency:8.2MHz/58KHz
 Internal Dimension:(H*W*D)
 164*150*82mm/6.46* 5.9*3.23 in.
 Material:PC+ABS
 Lock:Magnetic Locking
 Packing Details:50pcs/ctn,18.0kgs/ctn
 76*43*36cm



S058

Frequency:8.2MHz/58KHz
 Internal Dimension:(H*W*D)
 169*115*65mm/6.65* 4.53*2.6 in.
 Material:PC+ABS
 Lock:Magnetic Locking
 Packing Details:50pcs/ctn,14.0kgs/ctn
 65*42*32cm



S059

Frequency:8.2MHz/58KHz
 Internal Dimension:(H*W*D)
 225*115*65mm/8.86* 4.53*2.6 in.
 Material:PC+ABS
 Lock:Magnetic Locking
 Packing Details:50pcs/ctn,17.0kgs/ctn
 65*52*42cm

CHEWING GUM SAFER



Frequency:8.2MHz/58KHz
Material:ABS+PC
Lock:Magnetic Locking

Internal Dimension: 68Dia'*85mm (S060)
68Dia'*115mm (S062)
Packing Details: 100pcs/ctn, 10kg /ctn,53*46*36cm (S060)
100pcs/ctn, 12kg /ctn,53*46*46cm (S062)



S060 CHEWING GUM SAFER

Frequency:8.2MHz/58KHz
 Internal Dimension:(H*W*D)
 68 Dia**85mm/2.68*3.35 in.
 Material:PC+ABS
 Lock:Magnetic Locking
 Packing Details:100pcs/ctn,10.0kgs/ctn
 53*46*36cm



S062

Frequency:8.2MHz/58KHz
 Internal Dimension:(H*W*D)
 68 Dia**115mm/2.73*4.53 in.
 Material:PC+ABS
 Lock:Magnetic Locking
 Packing Details:100pcs/ctn,12.0kgs/ctn
 53*46*46cm



S063

Frequency:8.2MHz/58KHz
 Internal Dimension:(H*W*D)
 139*90*62mm/5.47*3.54*2.44 in.
 Material:PC+ABS
 Lock:Magnetic Locking

S061 Energizer Safer



S061

Frequency:8.2MHz/58KHz
 Internal Dimension:(H*W*D)
 105*65**22mm/4.13*2.56*0.87 in.
 Material:PC+ABS
 Lock:Magnetic Locking
 Packing Details:100pcs/ctn,8.0kgs/ctn
 61*35*16.5cm





CD/DVD Safer



S004 SINGLE DVD SAFER

Frequency:8.2MHz/58KHz
 Internal Dimension:(H*W*D)
 192*145*17mm/7.56*5.71*0.67 in.
 Material:PC+ABS
 Lock:Slide-open Magnetic Locking
 Packing Details:100pcs/ctn,16.0kgs/ctn,
 53*45*33cm



S017 DOUBLE CD/USB SAFER

Frequency:8.2MHz/58KHz
 Internal Dimension:(H*W*D)
 130*144*26mm/5.12*5.67*1.02 in.
 Material:PC+ABS
 Lock:Slide-open Magnetic Locking
 Packing Details:100pcs/ctn,15.0kgs/ctn,
 58*40*34cm



S031 DOUBLE DVD SAFER

Frequency:8.2MHz/58KHz
 Internal Dimension:(H*W*D)
 192*143*33mm/7.56*5.63*1.30 in.
 Material:PC+ABS
 Lock:Slide-open Magnetic Locking
 Packing Details:60pcs/ctn,17.0kgs/ctn,
 63*44*32cm



S032 TRIPLE DVD SAFER
 Frequency:8.2MHz/58KHz
 Internal Dimension:(H*W*D)
 192*143*54mm/7.56*5.63*2.13 in.
 Material:PC+ABS
 Lock:Slide-open Magnetic Locking
 Packing Details:40pcs/ctn,12.0kgs/ctn,
 60*43*30cm



S037 SINGLE CD SAFER
 Frequency:8.2MHz/58KHz
 Internal Dimension:(H*W*D)
 130*144*14mm/5.12*5.67*0.55 in.
 Material:PC+ABS
 Lock:Slide-open Magnetic Locking
 Packing Details:110pcs/ctn,22.0kgs/ctn,
 66*45*32cm



S038 TRIPLE CD SAFER
 Frequency:8.2MHz/58KHz
 Internal Dimension:(H*W*D)
 130*144*37mm/5.12*5.67*1.45 in.
 Material:PC+ABS
 Lock:Slide-open Magnetic Locking
 Packing Details:110pcs/ctn,22.0kgs/ctn,
 66*45*32cm

USE OF SAFER





Hook Safer



S006 SOAP SAFER

Frequency:8.2MHz/58KHz
 Internal Dimension:(H*W*D)
 53*119*51mm/2.09*4.68*2.01 in.
 Material:ABS+PC
 Lock:Magnetic Locking
 Packing Details:100pcs/ctn,12.0kgs/ctn,
 44*37*51cm



S007 SINGLE BATTERY SAFER

Frequency:8.2MHz/58KHz
 Internal Dimension:(H*W*D)
 79*110*19mm/3.11*4.33*0.75 in.
 Material:ABS+PC
 Lock:Magnetic Locking
 Packing Details:100pcs/ctn,5.8kgs/ctn,
 58*37*24cm



S008 Double Battery Safer

Frequency:8.2MHz/58KHz
 Internal Dimension:(H*W*D)
 80*110*32mm/3.15*4.33*1.26 in.
 Material:ABS+PC
 Lock:Magnetic Locking
 Packing Details:100pcs/ctn,10.0kgs/ctn,
 44*26*58cm



S009 MULTIFUNCTION SAFER

Frequency:8.2MHz/58KHz
 Internal Dimension:(H*W*D)
 162*119*27mm/6.38*4.68*1.06 in.
 Material:ABS+PC
 Lock:Magnetic Locking
 Packing Details:100pcs/ctn,17.0kgs/ctn,
 53*37*63cm



S015 MULTIFUNCTION SAFER

Frequency:8.2MHz/58KHz
 Internal Dimension:(H*W*D)
 151*119*43mm/5.94*4.69*1.69 in.
 Material:ABS+PC
 Lock:Magnetic Locking
 Packing Details:100pcs/ctn,16.5kgs/ctn,
 56*40*63cm



S018 MULTIFUNCTION SAFER

Frequency:8.2MHz/58KHz
 Internal Dimension:(H*W*D)
 170*124*50mm/6.69*4.88*1.97 in.
 Material:ABS+PC
 Lock:Magnetic Locking

Detacher





*D*etacher is a necessary product for unlocking the hard tags. There are two kinds: magnetic detacher and mechanical detacher. Both the shape and the magnetic force can be customized. Different detachers with different magnetic force correspond to different tags. Need to be choosed according to the shape and the lock of the hard tags.



D003 Golf Detacher

Unit Dimension:73 Dia'*33mm

Magnetic Force:8000GS/11000GS

Unit Packing Details:80*82*50mm/pc

Packing Details:50pcs/ctn,21.0kgs/ctn,41*29*20cm





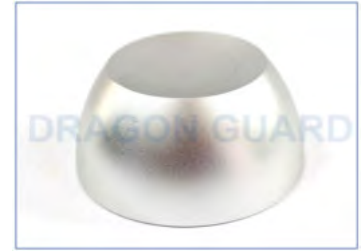
D001 COUNTERTOP DETACHER

Unit Dimension:75 Dia*22mm
 Magnetic Force:5000GS
 Unit Packing Details:75*75*32mm/pc
 Packing Details:100pcs/ctn,20.0kgs/ctn,
 43*34*21cm



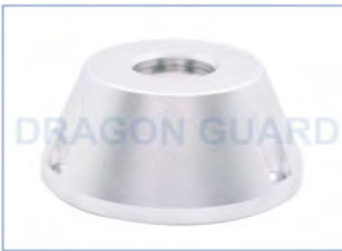
D002 CONE DETACHER

Unit Dimension:75 Dia*22mm
 Magnetic Force:3000-6000GS
 Unit Packing Details:75*75*32mm/pc
 Packing Details:100pcs/ctn,20.0kgs/ctn,
 43*34*21cm



D003 GOLF DETACHER

Unit Dimension:73 Dia*33mm
 Magnetic Force:8000GS/11000GS
 Color:Silver/Black
 Packing Details:50pcs/ctn,21.0kgs/ctn,
 41*29*20cm



D005 UNIVERSAL DETACHER

Unit Dimension:73 Dia*35mm
 Magnetic Force:≥11000GS
 Unit Packing Details:80*82*50mm/pc
 Packing Details:50pcs/ctn,16.5kgs/ctn,
 45*43*15cm



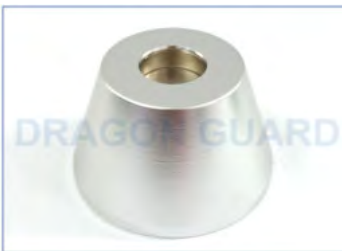
D006 PENCIL TAG DETACHER

Unit Dimension:85 Dia*50mm
 Magnetic Force:8000GS/11000GS
 Unit Packing Details:80*80*50mm/pc
 Packing Details:50pcs/ctn,21.0kgs/ctn,
 41*29*20cm



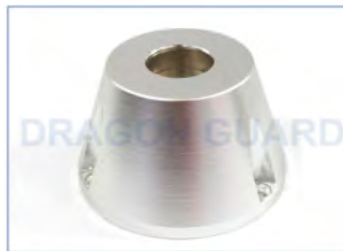
D007 GOLF DETACHER

Unit Dimension:74 Dia*33mm
 Magnetic Force:8000GS/11000GS
 Unit Packing Details:80*84*50mm/pc
 Packing Details:50pcs/ctn,19.0kgs/ctn,
 41*29*20cm



D008 CONE DETACHER

Unit Dimension:75 Dia*45mm
 Magnetic Force:8000GS/11000GS
 Unit Packing Details:80*80*52mm/pc
 Packing Details:50pcs/ctn,21.0kgs/ctn,
 41*29*20cm



D009 CONE DETACHER

Unit Dimension:75 Dia*45mm
 Magnetic Force:8000GS/11000GS
 Unit Packing Details:80*80*50mm/pc
 Packing Details:50pcs/ctn,20.0kgs/ctn,
 41*29*20cm



D010

Unit Dimension:74 Dia*45mm
 Magnetic Force:7500GS/9000GS/12000GS
 Packing Details:50pcs/ctn,22.0kgs/ctn,
 40*28*17cm



Dragon guard your treasure.

PAGE

Detacher

7-05

With me



All done!

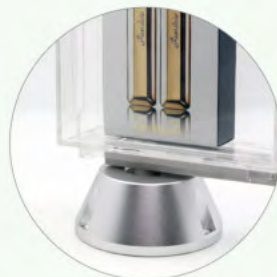
Universal Detacher



Spider Tag



Golf Tag



Safer



CanGrip



D011 FLAT GOLF DETACHER

Unit Dimension:72 Dia*35mm
 Magnetic Force:8000GS/11000GS
 Unit Packing Details:82*80*52mm/pc
 Packing Details:50pcs/ctn,19.0kgs/ctn,
 41*29*20cm



D012 KEY UNLOCK

Unit Dimension:89 Dia*35mm
 Magnetic Force:8000GS
 Unit Packing Details:80*80*50mm/pc
 Packing Details:50pcs/ctn,24.0kgs/ctn,
 41*29*20cm



D015 Pencil Tag Detacher

Unit Dimension:74 Dia*36mm
 Magnetic Force:8000GS/11000GS
 Unit Packing Details:82*82*52mm/pc
 Packing Details:50pcs/ctn,24.0kgs/ctn,
 41*29*20cm



D021 STOPLOCK DETACHER

Unit Dimension:21 Dia*57mm
 Magnetic Force:5000GS
 Packing Details:50pcs/ctn,3.0kgs/ctn,
 18*15*8cm



D021B

Unit Dimension:28 Dia*48mm
 Magnetic Force:8000GS
 Unit Packing Details:60*43*40mm/pc



D021C

Unit Dimension:40 Dia*52mm
 Magnetic Force:5000GS
 Unit Packing Details:60*43*40mm/pc



D022 EAS DETACHER

Unit Dimension:24*120*13mm
 Magnetic Force:3000GS
 Packing Details:50pcs/ctn,3.2kgs/ctn,
 31*24.5*8cm



D025

Unit Dimension:40 Dia*45mm
 Magnetic Force:5000GS/10000GS
 Unit Packing Details:75*75*50mm/pc
 Packing Details:50pcs/ctn,19.0kgs/ctn,
 40*28*17cm



D026

Unit Dimension:40 Dia*45mm
 Magnetic Force:5000GS/10000GS
 Unit Packing Details:75*75*50mm/pc
 Packing Details:50pcs/ctn,19.0kgs/ctn,
 40*28*17cm



D030

Unit Dimension:94 Dia*26mm
 Magnetic Force:6500GS
 Unit Packing Details:98*98*35mm/pc
 Packing Details:50pcs/ctn,32.0kgs/ctn,
 41.5*25.5*23cm



D032

Unit Dimension:60 Dia*30mm
 Magnetic Force:10000GS
 Unit Packing Details:75*75*50mm/pc
 Packing Details:50pcs/ctn,19.0kgs/ctn,
 40*28*17cm



D034

Unit Dimension:75 Dia*45mm
 Magnetic Force:8000GS
 Unit Packing Details:75*75*50mm/pc
 Packing Details:50pcs/ctn,21.0kgs/ctn,
 40*28*17cm



D035

Unit Dimension:64 Dia*38.5mm
 Magnetic Force:12500GS
 Unit Packing Details:75*75*50mm/pc
 Packing Details:50pcs/ctn,23.0kgs/ctn,
 40*28*17cm



D038

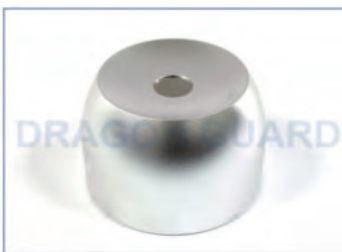
Unit Dimension:50 Dia*72mm
 Magnetic Force:≥10000GS
 Unit Packing Details:80*80*52mm/pc
 Packing Details:50pcs/ctn,15.0kgs/ctn



D041

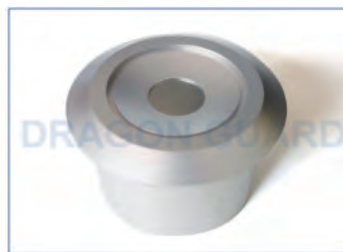
Unit Dimension:60 Dia*35mm
 Magnetic Force:10000GS
 Unit Packing Details:75*75*50mm/pc
 Packing Details:50pcs/ctn,20.0kgs/ctn,
 40*28*17cm

SUPER MAGNETIC DETACHER(14000GS-16000GS)



D019 HYPER DETACHER

Unit Dimension:78 Dia*51mm
 Magnetic Force:≥14000GS
 Unit Packing Details:1.06kgs/pc,90*90*60mm/pc



D017 FLAT HYPER DETACHER

Unit Dimension:85 Dia*50mm
 Magnetic Force:≥16000GS
 Unit Packing Details:0.96kgs/pc,90*90*760mm/pc
 Packing Details:20pcs/ctn,21.0kgs/ctn,46*31*20cm



D017 Flat Hyper Detacher

Detacher with key



D014 PLASTIC COATED DETACHER WITH LID

Unit Dimension:74 Dia*86mm
 Magnetic Force:5000GS/8000GS
 Material:Plastic
 Plastic Color:Black or Customized
 Unit Packing Details:80*80*50mm/pc
 Packing Details:50pcs/ctn,8.0kgs/ctn,40*30*25cm



D016 FLAT GOLF DETACHER WITH MAGNETIC LID

Unit Dimension:69 Dia*30mm
 Magnetic Force:11000GS
 Unit Packing Details:80*80*52mm/pc
 Packing Details:50pcs/ctn,16.5kgs/ctn,41*29*20cm



D018 PLASTIC COATED DETACHER WITH LID

Unit Dimension:84 Dia*92mm
 Magnetic Force:11000GS
 Material:Plastic
 Plastic Color:Black or Customized
 Unit Packing Details:88*84*75mm/pc
 Packing Details:50pcs/ctn,22.0kgs/ctn,45*32*30cm



D020 PLASTIC COATED DETACHER WITH GRIP

Unit Dimension:100*28*24mm
 Material:Plastic
 Plastic Color:Black or Customized
 Unit Packing Details:1pcs/ctn,0.07kgs/ctn,11*4*3cm



D023 PLASTIC COATED DETACHER

Unit Dimension:166*40*47mm
 Magnetic Force:4500-10000GS
 Material:Plastic
 Plastic Color:Black or Customized
 Unit Packing Details:200*73*56mm/pc



D024 Detacher

Unit Dimension:69Dia*44mm
 Magnetic Force:11000GS
 Unit Packing Details:80*80*52mm/pc
 Packing Details:50pcs/ctn,16.5kgs/ctn,41*29*20cm



D039 COUNTERTOP OR RECESSED DETACHER

Unit Dimension:102 Dia*44mm
 Magnetic Force:9000GS
 Material:Plastic
 Plastic Color:Black or Customized
 Weight:0.35kg/pc

AED003



- magnetic detacher
- super tag power detacher



super tag



magnetic tag



counter



charging cradle



AED001
Desktop Power Detacher

Unit Dimension:15*10*6cm
Material:Plastic
Color:Grey
Unit Packing Details:1.28kgs/pc,20*18*10cm/pc
Packing Details:10pcs/ctn,17.0kgs/ctn,
58*43*19cm



AED002
Flush Mount Power Detacher

Unit Dimension:23*18*6cm
Material:Plastic
Color:Grey
Unit Packing Details:1.35kgs/pc,24*24*10cm/pc
Packing Details:9pcs/ctn,18.0kgs/ctn,
60*50*36cm



AED003
Magnetic detacher &
Super tag power detacher

Handheld Part Dimension:22*9*10.5cm
Pedestal Part Dimension:14.5*10*7.5cm
Material:Plastic & Metal
Packing Details:4pcs/ctn,6.5kgs/ctn,
25*25*12.5cm



AH001
Hand Held Super Detacher

Unit Dimension:28*13*8cm
Material:Plastic
Color:Grey
Unit Packing Details:0.35kg/pc,28*13*8cm/pc
Packing Details:10pcs/ctn,6.0kgs/ctn,
42*29*27cm



AH002
Ultra Gator detacher

Unit Dimension:28*13*8cm
Material:Plastic & Metal
Color:White
Unit Packing Details:0.45kg/pc,24.5*11.4*7.5cm/pc
Packing Details:20pcs/ctn,9.0kgs/ctn,
50*40*27cm



AED005
Ultra-Gator Power detacher

Unit Dimension:19*10.15*11.4cm
Material:Plastic & Metal
Color:Beige



RF & AM LABEL

***E** AS soft label, can be stucked inside or outside products' package.*

When people pass the EAS system, the soft label without been deactivated by cashier, the system will alarm to draws attention to staff .

The soft label is very little and exquisite. Not only wont cover the commodity information, but also with anti-theft function, which is make customers feel good when they shopping.

RF Label



Product Specification

Label Size (MD×TD)	40*40mm
Substrate	20μm
Inductor Side	Aluminium,60μm
Capacitor Side	Aluminium,20μm
Max. Thickness	≈200μm
Shelf life of 2 years if stored at	10°to 25°C(50°to 70°F) and 35% to 65% RH
Service Temperature	-40°to 60°C(-40°to 140°F)
Application Temperature	above 0°(32°F)
Resonance Frequency	8.2MHz(±3%)
Effective Signal Volume	≥2000cm ³
Quality Factor	Q≥70
Deactivation Fieldstrength	0.9A/m— 1.5A/m
Operating Distance	up to 1.6m(5.2ft.)in Gate Configuration
Standard Packaging Format	Label facing out
Quantity per Roll	1000pcs
Roll Length	≈42.5m
Roll Diameter outer	φ<145mm
Cardboard Core Diameter inner	76.2mm
Box Packaging(Rolls)	20 Rolls
Box Packaging(Labels)	20000 Labels
Box Gross weight	10.5kg
Box Dimension	29*29*23cm

Advantage

- Strong adhesive, neat and smooth appearance, hard to be torn off from products.
- High Q value and 9 laps coil provide RF Label a super-wide detecting distance.
- Easy decoding. Match with Dragon Guard RF Deactivator with simple operation
- Strict production process. Defective rate is 0.03%.
- Complete specification ranges, provide Dragon Guard RF Label a larger selection of color, size and printing plate.





RL25*28
Barcode/White/Black/Transparent Thermal Paper Customized

Frequency:8.2MHz(±3%)
Cardboard Core Diameter Inner:76.2mm
Inter Space:2-3mm
Quality Factor:Q≥60
Packing Details:20000pcs/ctn,6.0kgs/ctn,
26*26*20cm(1000pcs/roll)



RL30*30
Barcode/White/Black/Transparent Thermal Paper Customized

Frequency:8.2MHz(±3%)
Cardboard Core Diameter Inner:76.2mm
Inter Space:2-3mm
Quality Factor:Q≥60
Packing Details:20000pcs/ctn,7.0kgs/ctn,
27*27*19cm(1000pcs/roll)



RL30*40
Barcode/White/Black/Transparent Thermal Paper Customized

Frequency:8.2MHz(±3%)
Cardboard Core Diameter Inner:76.2mm
Inter Space:2-3mm
Quality Factor:Q≥80
Packing Details:20000pcs/ctn,9.0kgs/ctn,
27*27*23cm(1000pcs/roll)



RL40*40
Barcode/White/Black/Transparent Thermal Paper Customized

Frequency:8.2MHz(±3%)
Cardboard Core Diameter Inner:76.2mm
Inter Space:2-3mm
Quality Factor:Q≥80
Packing Details:20000pcs/ctn,11.0kgs/ctn,
29*29*23cm(1000pcs/roll)



RL30*50
Barcode/White/Black/Transparent Thermal Paper Customized

Frequency:8.2MHz(±3%)
Cardboard Core Diameter Inner:76.2mm
Inter Space:2-3mm
Quality Factor:Q≥85
Packing Details:20000pcs/ctn,15.0kgs/ctn,
32*32*27cm(1000pcs/roll)



RL47*50
Barcode/White/Black/Transparent Thermal Paper Customized

Frequency:8.2MHz(±3%)
Cardboard Core Diameter Inner:76.2mm
Inter Space:2-3mm
Quality Factor:Q≥85
Packing Details:20000pcs/ctn,15.0kgs/ctn,
32*32*27cm(1000pcs/roll)



RL25*25 Transparent Label
Barcode/White/Black/Transparent Thermal Paper Customized

Frequency:8.2MHz(±3%)
Cardboard Core Diameter Inner:76.2mm
Inter Space:2-3mm
Quality Factor:Q≥70
Packing Details:20000pcs/ctn,6.0kgs/ctn,
26*26*20cm(1000pcs/roll)



RL46*57 Insert cosmetic label
Barcode/White/Black/Transparent Thermal Paper Customized

Frequency:8.2MHz(±3%)
Cardboard Core Diameter Inner:76.2mm
Inter Space:2-3mm
Quality Factor:Q≥85
Packing Details:10000pcs/ctn,15.4kgs/ctn,
24*26*33cm(1000pcs/roll)

Round Label



R33
Barcode/White/Black/Transparent Thermal Paper Customized

Frequency:8.2MHz(±3%)
Cardboard Core Diameter Inner:76.2mm
Inter Space:2-3mm
Quality Factor:Q≥60
Packing Details:20000pcs/ctn,7.0kgs/ctn,
27*27*19cm(1000pcs/roll)



R40
Barcode/White/Black/Transparent Thermal Paper Customized

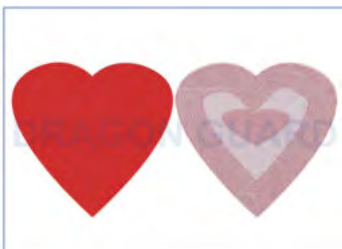
Frequency:8.2MHz(±3%)
Cardboard Core Diameter Inner:76.2mm
Inter Space:2-3mm
Quality Factor:Q≥80
Packing Details:20000pcs/ctn,11.0kgs/ctn,
29*29*23cm(1000pcs/roll)



R50
Barcode/White/Black/Transparent Thermal Paper Customized

Frequency:8.2MHz(±3%)
Cardboard Core Diameter Inner:76.2mm
Inter Space:2-3mm
Quality Factor:Q≥85
Packing Details:20000pcs/ctn,15.0kgs/ctn,
32*32*27cm(1000pcs/roll)

Special Label



RED HEART LABEL

Frequency:8.2MHz(±3%)
Cardboard Core Diameter Inner:76.2mm
Inter Space:2-3mm
Quality Factor:Q≥70
Packing Details:20000pcs/ctn,15.5kgs/ctn,
31*31*29cm(1000pcs/roll)



SPECIAL ROUND LABEL

Frequency:8.2MHz(±3%)
Cardboard Core Diameter Inner:76.2mm
Inter Space:2-3mm
Quality Factor:Q≥85
Packing Details:20000pcs/ctn,11.0kgs/ctn,
29*29*23cm(1000pcs/roll)



SPECIAL SQUARE LABEL

Frequency:8.2MHz(±3%)
Cardboard Core Diameter Inner:76.2mm
Inter Space:2-3mm
Quality Factor:Q≥85
Packing Details:20000pcs/ctn,11.0kgs/ctn,
29*29*23cm(1000pcs/roll)



COSMETIC LABEL
20*65MM

Transparent Customized

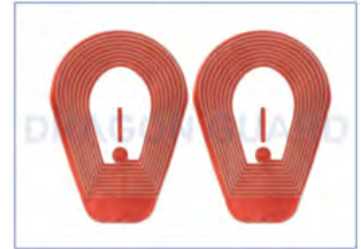
Frequency:8.2MHz(±3%)
Cardboard Core Diameter Inner:76.2mm
Packing Details:20000pcs/ctn,8.5kgs/ctn,
32*32*13.5cm(1000pcs/roll)



Insertable Cosmetic Label
20*78MM

Transparent Customized

Frequency:8.2MHz(±3%)
Cardboard Core Diameter Inner:76.2mm
Packing Details:20000pcs/ctn,11.5kgs/ctn,
32*32*27cm



SHOE LABEL
40*58MM

Transparent Customized

Frequency:8.2MHz(±3%)
Cardboard Core Diameter Inner:76.2mm
Packing Details:20000pcs/ctn,12.0kgs/ctn,
32*32*27cm(1000pcs/roll)



JEWELLERY LABEL
40*163MM

White Customized

Frequency:8.2MHz(±3%)
Cardboard Core Diameter Inner:76.2mm
Packing Details:5000pcs/ctn,7.5kgs/ctn,
42*21*27cm(500pcs/roll)



JEWELLERY LABEL
30*105MM

White Customized

Frequency:8.2MHz(±3%)
Cardboard Core Diameter Inner:76.2mm
Packing Details:10000pcs/ctn,8.0kgs/ctn,
26*26*32cm(500pcs/roll)

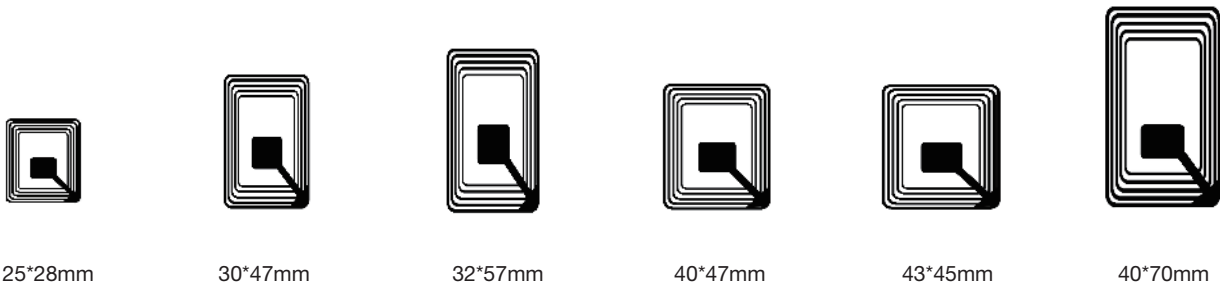
Customized Label

All the tags can be customized according to different requirements by distributors or retailers such as the logo of customers, customized pattern and different sizes.

Below are the cases we made for our customers:



Customized Size



AM Label



Product Specification

DR is a paste-type anti-theft label, composed of two pieces of vibration and a high-performance substrate. Deactivable & Non-Deactivable both available

White, barcode, black, customized logo are available. You can choose by sheet or roll.

Deactivated by AM deactivator.

This product is suitable for: clothing, shoes and hats, bags, and the packaging of daily necessities / food and so on.

Advantage

- Have less influence than RF label
- Small label, easy to stick on small items
- Reactivable
- White, black, barcode, customized logo are available

Environmental Constraints

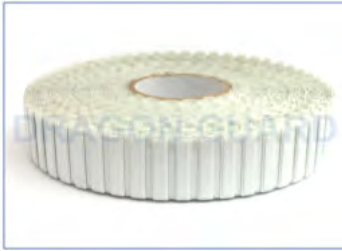
- Shelf Life: Two years from date of manufacture when labels are stored between 15-32 (60°F -90°F) and 30-80%RH.
- Temperature: Maximum storage temperature not to exceed 50 (122°F) for 96 hours at 80% RH.
- Humidity: Unaffected by 80% humidity at 50(122°F), up to 96 hours

Notice

Do not place DR label above the important words, such as product ingredients, methods of use, warning statements, dimensions and barcodes, production dates, and etc..

DR label with super glue, if you force to tear off it, the surface of merchandise will be damaged.

Therefore, should consider of this point in advance if you want to use it for gift, leather products, books and others.



DR-ROLL-WHITE

Frequency:58KHz
 Label Length:45mm±0.2mm
 Label Width:10.8mm±0.2mm
 Label Thickness (Excluding Base Material):1.74mm
 Label Thickness (Including Base Material): 1.83mm
 Base Material Width 48.64mm±0.75mm
 The Distance Of Two Labels 0.5mm±0.5mm
 Cardboard Core Diameter Inner 76.2mm
 PCS Per Roll 3000pcs or 5000pcs
 Packing Details:15000pcs/ctn,9.5kgs/ctn,
 35*35*28cm



DR-ROLL-BARCODE



DR-SHEET-BARCODE

Frequency:58KHz
 Label Length:45mm±0.2mm
 Label Width:10.8mm±0.2mm
 Label Thickness (Excluding Liner) Maximum:2.0mm
 Label Thickness(Including Liner)Maximum:2.5mm
 PCS Per Sheet:108pcs
 Packing Details:5000pcs/ctn,3.5kgs/ctn,
 29*21*12cm



DR-SHEET-WHITE



DR-SHEET-BLACK

Frequency:58KHz
 Label Length:45mm±0.2mm
 Label Width:10.8mm±0.2mm
 Label Thickness (Excluding Liner) Maximum:2.0mm
 Label Thickness(Including Liner) Maximum:2.5mm
 PCS Per Sheet:108pcs
 Packing Details:5000pcs/ctn,3.5kgs/ctn,
 29*21*12cm



DR-SHEET-ORANGE



WATERPROOF LABEL

Frequency:58KHz
 Label Length:50mm±0.2mm
 Label Width:14.5mm±0.2mm
 Label Thickness(Including Liner) Maximum:2.3mm
 PCS Per Sheet:108pcs
 Packing Details:5000pcs/ctn,3.5kgs/ctn,
 29*21*12cm



WATERPROOF LABEL



CUSTOMIZED LABEL

Frequency:58KHz
 Label Length:68.73mm±0.2mm
 Label Width:33.93mm±0.2mm
 Label Thickness (Excluding Liner) Maximum:0.32mm
 Label Thickness(Including Liner) Maximum:1.81mm
 PCS Per Roll:500pcs
 Packing Details:2000pcs/ctn,6.0kgs/ctn,30*30*38cm

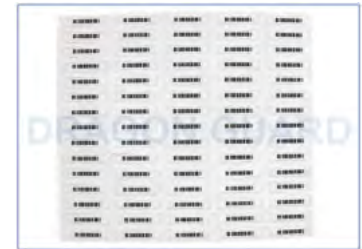


CUSTOMIZED LABEL



INSERTABLE LABEL

Frequency:58KHz
 Label Length:48mm±0.2mm
 Label Width:10.8mm±0.2mm
 Label Thickness (Excluding Liner) Maximum:2.0mm
 Label Thickness(Including Liner) Maximum:2.5mm
 PCS Per Sheet:75pcs
 Packing Details:2500pcs/ctn,2.2kgs/ctn,27*23*9cm



INSERTABLE LABEL



JEWELLERY-DR LABEL

Frequency:58KHz
 Label Length 58mm±0.2mm
 Label Width 10.8mm±0.2mm
 Label Thickness (Excluding Liner) Maximum:1.9mm
 Label Thickness(Including Liner) Maximum:2.0mm
 PCS Per Bag:1000pcs
 Packing Details:12000pcs/ctn,15.8kgs/ctn,
 57*33.5*22cm



JEWELLERY-DR LABEL



DR-FOOD-001/002/003

Frequency:58KHz
 Label Length:60mm±0.2mm
 Label Width:20mm±0.2mm
 PCS Per Bag:1000pcs
 Packing Details:4000pcs/ctn,3.0kgs/ctn,
 42.5*29*22cm



WATERPROOF LABEL



“SOURCE TAG”

Ensure security from the very beginning.



Like the name, sourcing tags are tags attached to commodities at beginning manufacture. It is widely adopted by large-scale retail business and chain business. Sourcing tags can help to solve the theft and fleeing problems from production, stocking, retail to inventory. By this way, labor cost and material resources can be saved a lot and business operating cost saved as well. For now, sourcing tags are widely used for anti-theft. Theft and shoplifting often happens in supermarket and chain stores, and to solve this problem, attaching tags is very necessary. While putting tag to each commodity is a time taking work, so the market adopts the way that putting tags onto commodities at beginning manufacture. In such way, market can save operating cost and also realize tag synchronization.



FULL CUSTOMIZATION: MATERIAL, SIZE, THE SEALING WAY, COLOR, PRINTING, THE RF LABEL, AM LABEL, RFID CARD

NORMAL SIZE: RF: 4.5*6; 5*6; 5*6.5; 5*5*6.5CM AM: 1.8*6; 2*6.5; 2*7; 2.2*7CM

THE SEALING WAY: HOT CUTTING; EMBOSSED



WL-AM-PAPER-001



WL-RFID-001



SEALED: WL-AM-001
NON-SEALED: WL-AM-002



SEALED: WL-RF-001
NON-SEALED: WL-RF-002



Frequency:8.2MHz
 Unit Dimension:50 Dia**20mm
 Plastic Color:Grey or Customized
 Lock:Compatible With Over 16000GS
 Super Magnetic
 Packing Details:1000pcs/ctn,16.0kgs/ctn,
 46*32*36cm

T050 ECCENTRIC CIRCLE



T050 ECCENTRIC CIRCLE



Frequency:8.2MHz
 Unit Dimension:50 Dia**19mm
 Plastic Color:Black,White or Customized
 Lock:Magnetic Locking
 Packing Details:1000pcs/ctn,10.5kgs/ctn,
 50*33*23cm

T035 R50



T035 R50



Frequency:58KHz
 Unit Dimension:61*30*17mm
 Plastic Color:Grey,Black or Customized
 Lock:Compatible with Sensormatic Detacher
 Packing Details:1000pcs/ctn,8.5kgs/ctn,
 46*32*21cm

T040 SUPER TAG VST

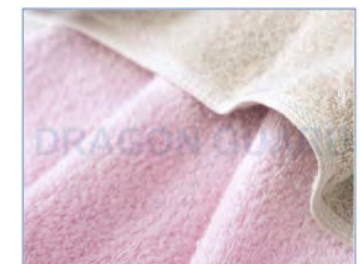


T040 SUPER TAG VST



Frequency:58KHz
 Unit Dimension:10.2 Dia**42.67mm
 Plastic Color:Grey,Black or Customized
 Packing Details:
 3000pcs/ctn,11.0kgs/ctn,43*29*20cm
 5000pcs/ctn,17.0kgs/ctn,46*34*29cm

T029 TOWEL TAG



T029 TOWEL TAG





*D*isplay security is a kind of anti-theft product, which has the alarm function, is controlled by remote control, and with rechargeable lithium battery.

Commonly, it is used to protect smart phone, pad, smart watch and other electronic products.

The advantages of fashionable outlook, easy operation, beautiful displayed enhance the shopping experience.

It is particularly suitable for digital shopping mall, brand stores, mobile business hall and other stores which have high requirements on display.



DSP1001

Unit Dimension:103*67*105mm
Material:ABS
Color:White
Apply:Mobile Phone
Packing Details:56pcs/ctn,19.5kgs/ctn,
60*48*34cm



DSP1002

Unit Dimension:103*67*146mm
Material:ABS
Color:White
Apply:Mobile Phone
Packing Details:45pcs/ctn,17.0kgs/ctn,
60*48*34cm



DSP2001

Unit Dimension:108*46*160mm
Material:EPS
Color:White
Apply:Mobile Phone
Packing Details:25pcs/ctn,7.5kgs/ctn,
56*43*20cm



DSP5001

Unit Dimension:70*65*107mm
Material:ABS
Color:White
Apply:Mobile/Watch/Camera/PAD etc.
Packing Details:56pcs/ctn,19.5kgs/ctn,
60*48*34cm



DSP5002

Unit Dimension:75*70*85mm
Material:ABS
Color:White
Apply:Mobile Phone
Packing Details:50pcs/ctn,12.0kgs/ctn,
65*45*18cm



DSP5005

Unit Dimension:59*63*63mm
Material:ABS+PMMA+Aluminium Alloy
Color:White
Apply:Mobile Phone
Packing Details:80pcs/ctn,17.0kgs/ctn,
75*33*29cm



DSP6002

Unit Dimension:75 Dia**130mm
Material:ABS
Color:White
Apply:Mobile Phone
Packing Details:50pcs/ctn,11.5kgs/ctn,
65*45*25cm



DSP6003

Unit Dimension:52*80mm
Material:ABS+VioGi Aluminum
Color:White
Apply:Mobile Phone



DSPM1602

Unit Dimension:45*60*80mm
Material:ABS+VioGi Aluminum
Color:White/Silvery
Apply:Mobile Phone
Packing Details:80pcs/ctn,17.0kgs/ctn,
75*33*29cm



PAD1001

Unite Dimension:144*119*57mm
Material:Acrylic+ABS
Color:White
Apply:PAD
Packing Details:30pcs/ctn,11.46kgs/ctn,
60*48*34cm



PAD1002

Unite Dimension:132*111*150mm
Material:Acrylic+ABS
Color:White,Black
Apply:PAD
Packing Details:20pcs/ctn,8.5kgs/ctn,
75*33*29cm



PAD3001

Unite Dimension:140*110*100mm
Material:Metal+ABS
Color:White or Customized
Apply:PAD
Packing Details:22pcs/ctn,11.0kgs/ctn,
52.5*39*27cm



LP001 LAPTOP LOCK

Unite Dimension:56*18*21mm
Weight:41.8g
Cabel Diameter:5 Dia'mm
Cabel Length:2m



DSP3001

Unite Dimension:90*53*53mm
Material:ABS
Color:White
Packing Details:22pcs/ctn,12.0kgs/ctn,
52.5*39*27cm





DSW1602
 Unite Dimension:87*73*115mm
 Material:Acrylic+ABS
 Battery Capacity:250mAh
 Stand-by time:5-10days
 Color:White/Black
 Apply:Watch/Smart Ring
 Packing Details:20pcs/ctn,9.0kgs/ctn,
 75*33*29cm



DSW1604
 Unite Dimension:87*73*115mm
 Material:Acrylic+ABS
 Battery Capacity:210mAh
 Stand-by time:12-15 months
 Color:White/Black
 Apply:Watch/Smart Ring
 Packing Details:20pcs/ctn,6.0kgs/ctn,
 75*33*29cm



HP002
 Unite Dimension:78*49*128mm
 Material:ABS
 Battery Capacity:1000mAh
 Color:White/Black
 Apply:Watch/Smart Ring
 Packing Details:38pcs/ctn,9.5kgs/ctn,
 52.5*39*27cm



MOBILE PHONE



CAMERA



WATCH



PAD

*New Upgraded Generation
longer life much stronger
more than 50000+ times tensile test*





Application: Headphones, laptop, bottles, acoustics, etc



Model No.	HP001	Battery Capacity	650mAh
Dimension	60*60*45mm	Stand-by time	15 Months
Material	ABS	Color	White,Black
Charging Voltage	3.7V	Paking Details	80pcs/ctn,10kg/ctn, 75*33*29cm



Security hook stop locks are mainly used with security hooks for security of products on display and products in supermarket as well as other large shopping facilities.

The advantage of security hook stoplock is to ensure commodities security without affecting the appearance of goods and customers' shopping experience.



D042



H001



H002



SL006B



SL006



H003



D021



SECURE FIXTURE



Part# SL004/5/6/7/8
Dimension:39*19*15mm
Color:Red/Yellow/Black/Customized
Aperture Diameter:4/5/6/7/8 Dia'mm
Packing Details:2000pcs/ctn,12.3kgs/ctn,47*32*21cm



SF1001
Length:16cm,18cm,25cm or customized
Lock:Magnetic Locking
Packing Details:50pcs/ctn,7.0kgs/ctn,38*27*28cm



SL006

Aperture Diameter:6Dia'mm
 Unit Dimension:39*19*15mm
 Color:Red,Blue,Yellow,Black or Customized
 Lock:D021 Stoplock Detacher
 Packing Details:2000pcs/ctn,12.03kgs/ctn,
 47*32*21cm



SL006



SL006B

Aperture Diameter:4.5/6Dia'mm
 Unit Dimension:40*20*18mm
 Color:Red,Blue,Yellow,Black or Customized
 Lock:D021 Stoplock Detacher
 Packing Details:1000pcs/ctn,9.0kgs/ctn,
 40*30*20cm



SL006B



D021 Stoplock Detacher

Unit Dimension:21 Dia*57mm
 Magnetic Force:5000GS
 Packing Details:50pcs/ctn,3.0kgs/ctn,
 18*15*8cm



D021 Stoplock Detacher



D042 Detacher

Unit Dimension:67*35*18mm
 Magnetic Force:3000GS



D042 Detacher



H001

Aperture Diameter:5/6/7 Dia'mm
 Unit Dimension:70*19mm
 Color:Red,Grey Black or Customized
 Lock:D021 Stoplock Detacher
 Packing Details:1000pcs/ctn,12.0kgs/ctn,
 40*30*24cm



H001



H002

Aperture Diameter:6 Dia'mm
 Unit Dimension:54*20*23.5mm
 Color:White,Grey or Customized
 Lock:D023 Detacher
 Packing Details:1000pcs/ctn,17.0kgs/ctn,
 60*24*30cm



H002



H003

Aperture Diameter:8.1*34mm
 Unit Dimension:45.2*22.5*12.8mm
 Color:White,Grey or Customized
 Lock:D021 Stoplock Detacher
 Packing Details:500pcs/ctn,7.7kgs/ctn,
 40*25*18cm



H003



H005

Aperture Diameter:8.1*34mm
 Unit Dimension:45.2*22.5*12.8mm
 Color:White,Grey or Customized
 Packing Details:500pcs/ctn,7.7kgs/ctn,
 40*25*18cm



H005



Advantage

- Easy assembling,easy operation,bearing and tightly.
- 50% of labor cost- reduction, 70% Space-saving .
- Safely display your products and increase sales value.
- The goods can be displayed in good order and appearance, it not only keeps the goods in safe state,but also make the clients clear at a glance.
- Mainly used for display sales of blister & packaging commodities.

Unite Dimension:150*180*250mm
Material:Aluminium Alloy &ABS

Net Weight:150g
Lock:Special Super Magnetic



SF4001



SF4002



SF4003



SF4004

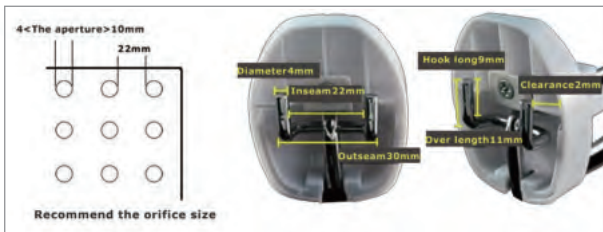


PRODUCT SPECIFICATION:

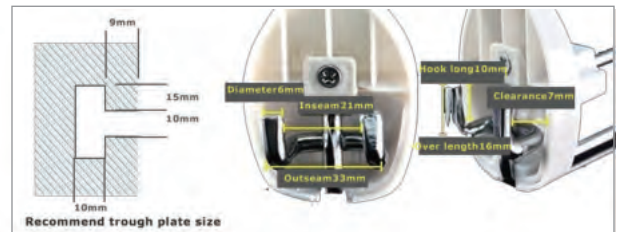
Installation: Fixed on the slat wall or pegboard.
 Length: 16cm, 18cm, 25cm or Customized
 Lock: Magnetic Locking.
 Packing Details: 50pcs/ctn, 7.0kgs/ctn, 38*27*28cm

APPLICATION:

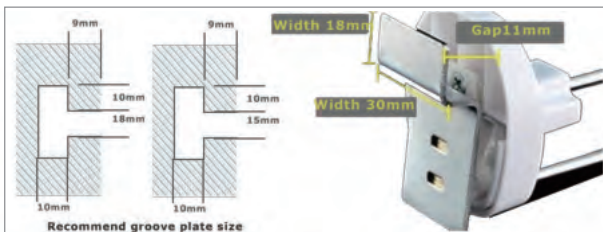
Digital stores, cellphone stores, book stores, pharmacies, auto accessories stores, shopping malls, exhibition places, branded chain stores, experience stores, image stores, flagship stores etc.



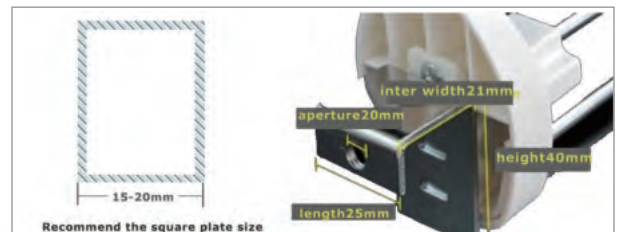
SF1001- ORIFICE PLATE



SF2001-SLOT PLATE



SF2002-GROOVE PLATE



SF3001-SQUARE TUBE





AM System

Advantages of AM system:

- 1.Excellent detection performance*
- 2.Wider aisle allowed*
- 3.Strong anti-interference ability*

Acoustic magnetic system mainly use acrylic or resin material, fashionable and beautiful, greatly reduce the losses of shoplifting in shops, and creates a better atmosphere of an honest and safe retail environment.

AM hard tags are available in many different form factors, and AM adhesive label is very small than RF label, which can bring a more secure and concealed protection.



AS1001

Master/Slave

Product Specification

- Use high quality aluminum alloy material, more durable.
- Super anti-interference performance, strong resistance to metal shielding.
- Can be posted advertising painting, beautiful appearance, has promotional and hidden function

Frequency	58KHz	
Unit Dimension	163*36*8cm(H*W*D)	
Material	Aluminium Alloy	
Packing Details	2pcs/ctn,25.0kgs/ctn,169*27.1*41.5cm	
Application	Supermarket,garment shop,digital shop etc.	
Detection Distance	DUAL DR label: 1.5-1.7m Hard Tag:1.8-2.0m	MONO DR label: 0.75-0.85m Hard Tag:0.9-1.0m





AS1002

Master/Slave

Product Specification

- The outer border of the reinforcement Aluminum Alloy, fire resistant collision.
- Inner surface embedded imported acrylic sheet, can be inserted billboards.
- Mobile phone APP and computer wireless software two debugging modes are optional.

Frequency	58KHz	
Unit Dimension	160cm*37cm*4.5cm(H*W*D)	
Material	Reinforcement Aluminum Alloy & acrylic	
Packing Details	Master: 8.5KG Slave: 6.5KG	
Application	Supermarket,garment shop,digital shop etc.	
Detection Distance	 ((DR label:1.7-1.9m))	 ((Hard Tag:2.0-2.5m))

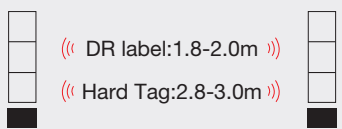


AS1003

Master/Slave

Product Specification

- Low voltage and radiation - safety, energy saving and environmental protection;
- Innovative features - advertising and making profit for customers;
- Remote after-sale service - solving the problem more efficiently;
- Transceiver - master work alone, one master with two slave reduce costs.

Frequency	58KHz±0.5KHz
Unit Dimension	151.5*39.5*9cm(H*W*D)
Material	Imported Acrylic + Aluminum Alloy Frame
Packing Details	1pc/ctn, 11kgs/ctn, 160*45*15cm
Application	Supermarket, garment shop, digital shop etc.
Detection Distance	 <p>(((DR label:1.8-2.0m))) (((Hard Tag:2.8-3.0m)))</p>

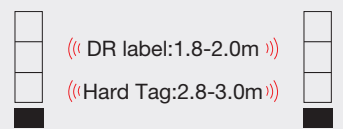


AS1004

Master/Slave

Product Specification

- Low voltage and radiation - safety, energy saving and environmental protection;
- Innovative features - advertising and making profit for customers;
- Remote after-sale service - solving the problem more efficiently;
- Transceiver - master work alone, one master with two slave reduce costs.

Frequency	58KHz±0.5KHz
Unit Dimension	152.5cm*40cm*9cm(H*W*D)
Material	Imported Acrylic + Aluminum Alloy Frame
Packing Details	1pc/ctn, 14kgs/ctn, 160*45*15cm
Application	Supermarket, garment shop, digital shop etc.
Detection Distance	 <p>(((DR label:1.8-2.0m))) (((Hard Tag:2.8-3.0m)))</p>



AS4001

Dual/Mono

Product Specification

- Body is made from high light transmittance acrylic. With graceful outlook, it can leave customers an elegant sumptuous impression of the store.
- Among similar antennas, this one is with better detecting distance and anti-interference performance, which make it suitable for all kinds of high-end brand garment stores.
- Very stable performance, longer detecting distance

Frequency	58KHz	
Unit Dimension	150*39*2.5cm(H*W*D)	
Material	Acrylic	
Packing Details	1pcs/ctn,26.5kgs/ctn,161.5*46.5*14cm	
Application	Supermarket,garment shop,digital shop etc.	
Detection Distance	DUAL DR label: 1.2-1.4m Hard Tag:1.8-2.0m	MONO DR label: 0.6-0.7m Hard Tag:0.9-1.0m





AS4002

Master/Slave

Product Specification

- Industrial DSP digital signal processor, automatic tuning circuit , plug and play, hardware and software synchronization debugging, Sound and light alarm, wireless synchronization system is simple to install,AS4002 can play any format video files, pictures, music and so on.
- AS4002 is anti-theft system, at the same time, it has advertising effect, increase the attractiveness of goods, and promote corporate propaganda.

Frequency	58KHz	
Unit Dimension	150*37*2.5cm(H*W*D)	
Material	Acrylic	
Packing Details	1pcs/ctn,22.0kgs/ctn,167.5*44.5*21.5cm	
Application	Supermarket,garment shop,digital shop etc.	
Detection Distance	 ((DR label:1.1-1.2m))	 ((Hard Tag:1.4-1.8m))



AS4004

Dual/Mono

Product Specification

- Made by Germany imported acrylic material, beautiful and clear appearance, will not be deformed.
- Easy installation, without debugging and no need to connect with external host.
- With LED display counter, can be adjusted by remote control.

Frequency	58KHz	
Unit Dimension	150*40*2cm(H*W*D)	
Material	Acrylic	
Packing Details	1pcs/ctn, 22.0kgs/ctn, 160*48*17cm	
Application	Supermarket, garment shop, digital shop etc.	
Detection Distance	DUAL DR label: 1.2-1.6m Hard Tag: 1.5-3.0m	MONO DR label: 0.6-0.8m Hard Tag: 0.75-1.5m

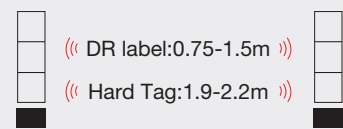


AS4005

Master/Slave

Product Specification

- Made by Germany imported acrylic material, beautiful and clear appearance, will not be deformed
- Easy installation, without debugging and no need to connect with external host
- Strong anti-interference ability, almost no false alarm

Frequency	58KHz	
Unit Dimension	160cm*43cm*20cm(H*W*D)	
Material	Acrylic	
Packing Details	2pcs/ctn, 23.0kgs/ctn, 162*51*21cm	
Application	Supermarket, garment shop, digital shop etc.	
Detection Distance		

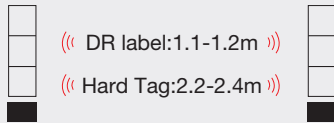


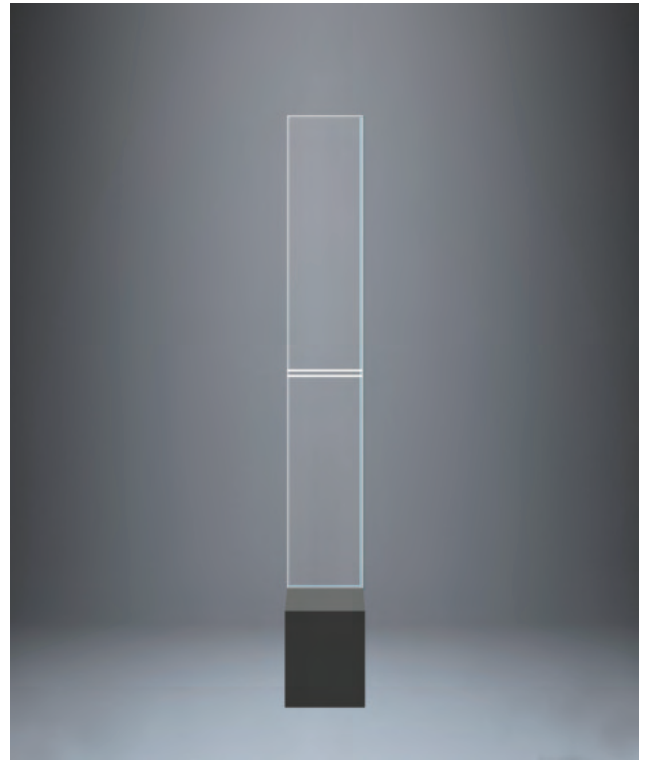
AS4006

Master/Slave

Product Specification

- Germany imported acrylic, transparent and fashion-forward design, high temperature resistance, no deformation
- Suitable for boutiques, blend perfectly with the surrounding decor
- Digital signal processing technology
- Self-adjusting electronics(SMD) technology

Frequency	58KHz
Unit Dimension	153*39*2.5cm(H*W*D)
Material	Acrylic
Packing Details	1pc/ctn,24kgs/ctn,167*50*14cm
Application	Supermarket,garment shop,digital shop etc.
Detection Distance	 <p>(((DR label:1.1-1.2m))) (((Hard Tag:2.2-2.4m)))</p>

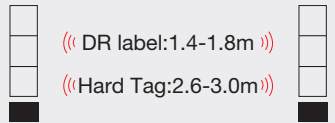


AS4007

Master/Slave

Product Specification

- Motherboard is an intelligent digital display board.
- Effectively shorten the detection distance of the antenna outside (such as anti-theft tag), reduce false alarm.
- Super anti-interference ability. Can be used with other installed antennas.

Frequency	58KHz
Unit Dimension	146cm*20cm*2cm(H*W*D)
Material	Acrylic
Packing Details	1pc/ctn,29kgs/ctn,154*28*31cm
Application	Supermarket,garment shop,digital shop etc.
Detection Distance	 <p>(((DR label:1.4-1.8m))) (((Hard Tag:2.6-3.0m)))</p>

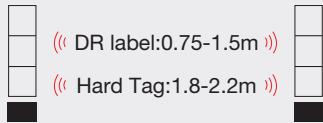


AS5001

Master/Slave

Product Specification

- Made by high strength ABS material, beautiful and clear appearance
- Easy installation, without debugging and no need to connect with external host
- The world's leading self-test technology and DSP digital signal processing system to ensure the high detection rate
- Strong anti-interference ability, almost no false alarm


Frequency	58KHz
Unit Dimension	157.5*43*14cm(H*W*D)
Material	ABS
Packing Details	1pcs/ctn,9.5kgs/ctn(master),5.5kgs/ctn(slave)
Application	Supermarket,garment shop,digital shop etc.
Detection Distance	 <p>(((DR label:0.75-1.5m))) (((Hard Tag:1.8-2.2m)))</p>



AS6001

Product Specification

- Completely hidden guarantee store beautiful appearance,while improving the space utilization rate.
- Buried antenna provides wide protection of entrance and exit.
- The newest hardware designs makes the installation& debugging more convenience.
- Eight-core cable wiring, the device can be debugged online.

Frequency	58KHz
Unit Dimension	186*60*2cm(H*W*D)
Material	ABS
Packing Details	Antenna:1pcs/ctn,11.5kgs/ctn,190*65*2.5cm Controller:1pcs/ctn,6.5kgs/ctn,46.5*28.5*21.5cm Power Amplifier:1pcs/ctn,2.5kgs/ctn,32.5*27.5*6.6cm
Working Model	1 antennas+1 controller+1 matching boards
Detection Distance	 <p>↑ Detection Height 0-0.7m for DR label 0-1.6m for Hard Tag</p>



AS7001

Dual/Mono

Product Specification

- Automatically adjust the signal
- With anti-interference technology, intelligent detection
- High-speed DSP digital signal processing, improved the detection rate and stability

Frequency	58KHz	
Unit Dimension	148*45*12cm(H*W*D)	
Material	ABS	
Packing Details	2pcs/ctn,21.0kgs/ctn,150*51*24cm	
Application	Supermarket,garment shop,digital shop etc.	
Detection Distance	DUAL DR label: 1.4-1.6m Hard Tag:2.2-2.4m	MONO DR label: 0.7-0.8m Hard Tag:1.1-1.2m



AS8001

Mater/Slave

Product Specification

- DSP (Digital Signal Processing) technology with high sensitivity.
- Strong anti-interference technologies and minimize false alarm.
- HIPS material,sleek modern new design,very stable performance and ultra wide detection distance.

Frequency	58KHz	
Unit Dimension	143.5*38*1.5(H*W*D)	
Material	HIPS	
Packing Details	13.5kgs/ctn(master),15.0kgs/ctn(slave),150*45*19cm	
Application	Supermarket,garment shop,digital shop etc.	
Detection Distance	DR label:1.1-1.3m Hard Tag:1.8-2.0m	



AS9006 Product Specification

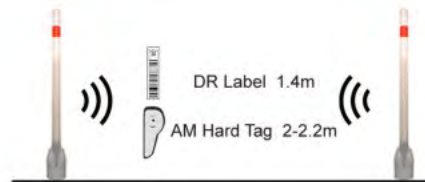
Frequency	58KHz
Working Environment	-20°C-60°C
Material	FRP+Metal

Working Voltage	110V-240V
Unit Dimension	155*49.5*3.2cm
Packing Details	2pc/ctn,17.0kgs/ctn 160*58*25CM

(MONO)Detection Distance:



(DUAL)Detection Distance:



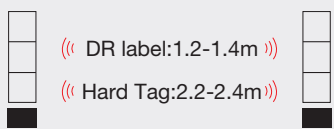


AS9006

Master/Slave

Product Specification

- Use imported high standards of high hardness FRP material, high temperature resistant, novel material and elegant appearance
- Wide detection range, the maximum distance between two antennas can be achieved 2.8 meters detection distance, multiple combinations are available
- Easy Installation, plug and play, can be automatically adjusted and synchronized

Frequency	58KHz
Unit Dimension	155cm*49.5cm*3.2cm(H*W*D)
Material	FRP+Metal
Packing Details	2pcs/ctn,17.0kgs/ctn,160*58*25cm
Application	Supermarket,garment shop,digital shop etc.
Detection Distance	

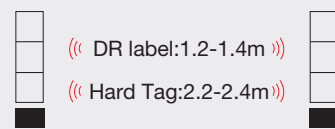


AS9002

Mater/Slave

Product Specification

- Easy installation, High performance
- Wide detection range
- Advanced technology with software control which ensures antenna works stable even under the noise environment.

Frequency	58KHz
Unit Dimension	154.8cm*40cm*13cm(H*W*D)
Material	ABS
Packing Details	15.0kgs/ctn(master),11.0kgs/ctn(slave),172*47*20cm
Application	Supermarket,garment shop,digital shop etc.
Detection Distance	



Dragon guard your treasure.

AM Deactivator



AD005
(Desktop)



AD004
(Flush Mount)

Item No.	AD005	AD004
Frequency	58KHz	58KHz
Size	16*20*4cm	19.5*23*6cm (Panel)
Material	ABS plastic	ABS plastic
Detection Height	10~18cm	10~18cm
Decoding Height	5cm	5cm
Packing Details	1pc/ctn , 2.3kg/ctn , 27*27*15cm	



AD003 AM DEACTIVATOR

Frequency:58KHz
 Unit Dimension:Decoding Board 23*24*3cm
 Decoder: 19*23*5cm
 Detection Range:6-8cm
 Detection Height:≤8cm
 Color:Dark Grey
 Packing Details:1pc/ctn,3.5kgs/ctn,38*28*16cm
 5pc/ctn,19.0kgs/ctn,58*40*48cm



AHD001 AM HANDHELD DETECTOR

Frequency:58KHz
 Working Voltage:9V
 Unit Dimension:37*8*3cm
 Detection Range:10-15cm
 Color:Black
 Packing Details:1pc/ctn,0.3kgs/ctn,39*9*4cm



AD004 AM INTERGRATED DEACTIVATOR (FLUSH MOUNT)

Frequency:58KHz
 Material:ABS plastic
 Deactivating height:8-12cm
 Pannel size:19.5*23cm
 Built-in size:16.5*21cm
 Color:Dark Grey
 Packing Details:1pc/ctn,2.3kgs/ctn,27*27*15cm



AD005 AM INTERGRATED DEACTIVATOR (DESKTOP)

Frequency:58KHz
 Material:ABS plastic
 Deactivating height:8-12cm
 Size:16*20*4cm
 Color:Dark Grey
 Packing Details:1pc/ctn,2.3kgs/ctn,27*27*15cm



AD007 AM DEACTIVATOR

Frequency:58KHz
 Panel Size:22.8*19.8*6.2cm
 Cut Slot Size:21*18cm
 Detection Height:10-18cm
 Decoding Height:5cm
 Packing Details:1pc/ctn, 1.9kg/ctn,
 31.5*26*8cm



AD008 AM DEACTIVATOR

Frequency:58KHz
 Unit Dimension:15.5*10.8*0.8cm
 Color:Black
 Packing Details:100pc/ctn,23.5kgs/ctn,40*28*17cm

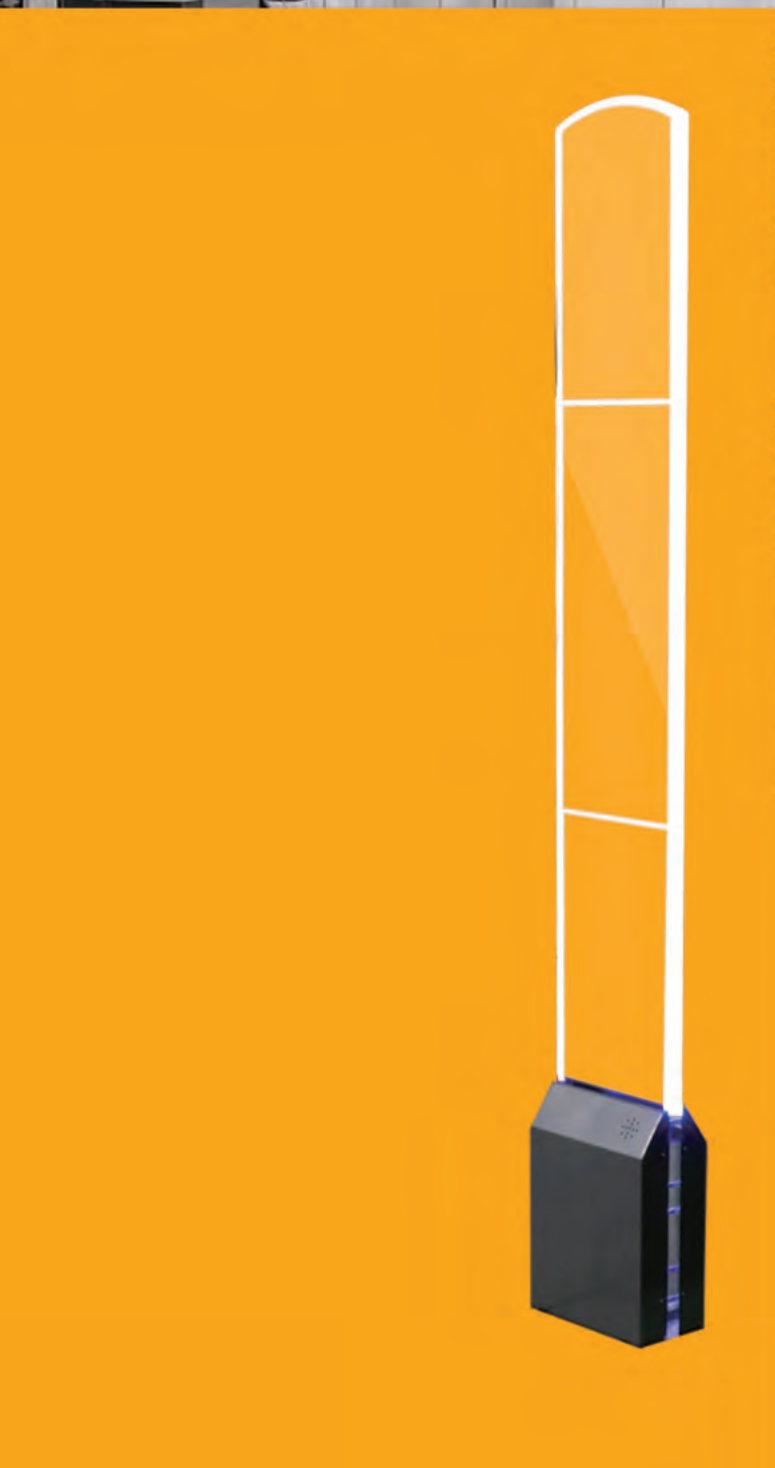
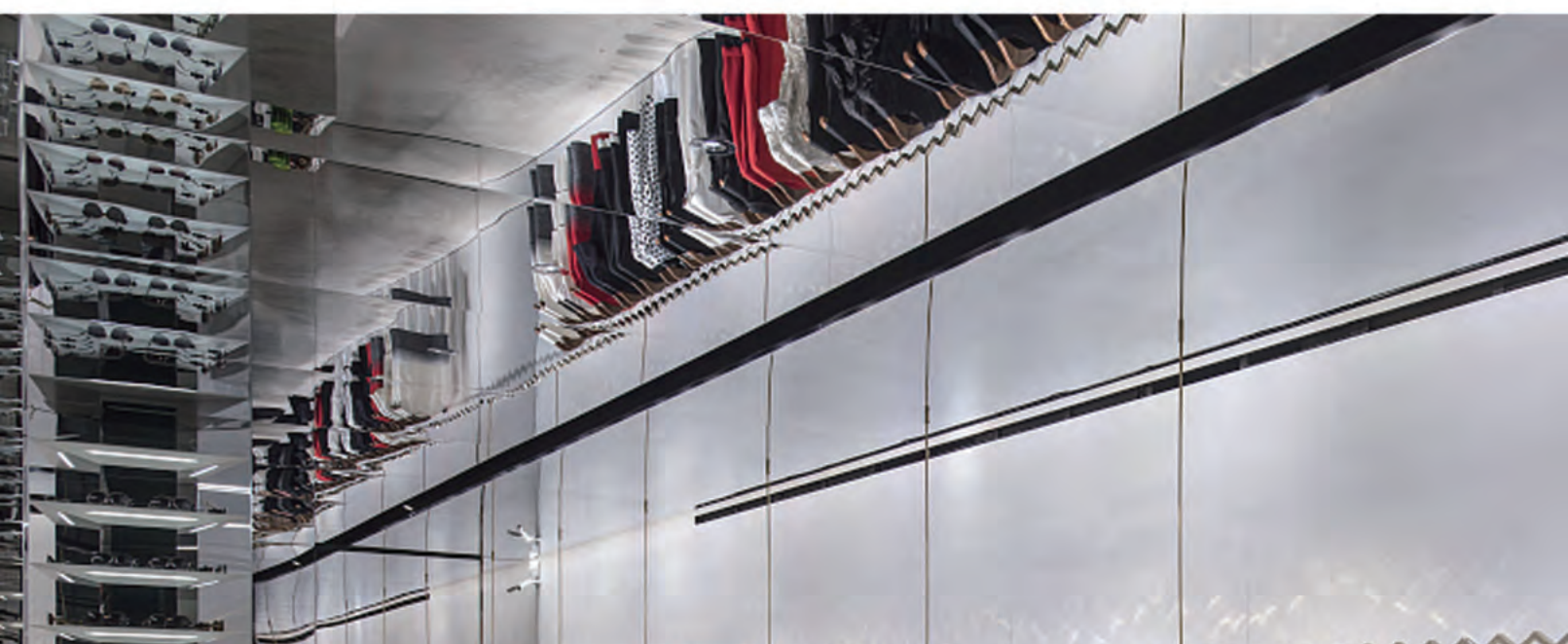


AD006 AM INTERGRATED DEACTIVATOR

Frequency:58KHz
 Deactivating height:8-12cm
 Pannel size:20.5*20.5cm
 Built-in size:18.5*18.5cm
 Color:Black/Dark Red
 Packing Details:1pc/ctn,2.4kgs/ctn,28*24.5*14.5cm
 5pc/ctn,12.6kgs/ctn,74.5*30*26.5cm



AD006 AM INTERGRATED DEACTIVATOR





RF System

Due to the high frequency of RF, high efficiency, the required transmission power is small, RF antenna can be done slim and delicate, more beautiful and fashionable.

***R**F anti-theft system is one of the earliest application of electronic anti-theft system. With mature technology, high detection rate, wide installation distance, it can protect the major commodities in the shop better. What's more, it can be used alone or as needed to form multiple channels for flexible installation.*




RS4001

Dual

Product Specification

- Adapting good digital signal processing technology and automatic gain control function of advanced pulse AGC technology. At the same time double screening AGC more adaptable.
- The main function is controlled by the single-chip and intelligent application software. With PIT detection technology, identification code technology, LED multi-functional full process display technology

Frequency	8.2MHz
Unit Dimension	155*36*2cm(H*W*D)
Material	Aluminum Alloy+ABS
Packing Details	2pc/ctn, 15.0kgs/ctn, 161*42*20cm
Apply	Supermarket, garment shop, cosmetic shop etc.
Detction Distance	



RS5005

Dual/Mono

Product Specification

- Digital sensitivity condition, better anti-interference capability
- Chip can be upgrade online when in necessary
- High efficiency power management (DC/DC) function
- Double mounting holes, compatible with common RF motherboard.

Frequency	8.2MHz								
Unit Dimension	153*42*8cm(H*W*D)								
Material	Aluminum Alloy								
Packing Details	2pc/ctn, 13.0kgs/ctn, 156*45*13cm(Dual) 1pc/ctn, 9.0kgs/ctn, 156*45*13cm(Mono)								
Apply	Supermarket, garment shop, cosmetic shop etc.								
Detction Distance	<table border="0"> <tr> <td>DUAL</td> <td>MONO</td> </tr> <tr> <td>RL 4'4":1.2-1.4m</td> <td>RL 4'4":0.6-0.7m</td> </tr> <tr> <td>T002 mini square:1.4-1.8m</td> <td>T002 mini square:0.7-0.9m</td> </tr> <tr> <td>T004 large square:1.8-2.2m</td> <td>T004 large square:0.9-1.1m</td> </tr> </table>	DUAL	MONO	RL 4'4":1.2-1.4m	RL 4'4":0.6-0.7m	T002 mini square:1.4-1.8m	T002 mini square:0.7-0.9m	T004 large square:1.8-2.2m	T004 large square:0.9-1.1m
DUAL	MONO								
RL 4'4":1.2-1.4m	RL 4'4":0.6-0.7m								
T002 mini square:1.4-1.8m	T002 mini square:0.7-0.9m								
T004 large square:1.8-2.2m	T004 large square:0.9-1.1m								



RS4002

Dual/Mono

Product Specification

- Easy installation, High performance
- Wide detection range
- Advanced technology with software control which ensures antenna.
- Works stable even in the noise environment.

Frequency	8.2MHz	
Unit Dimension	160*39*4.5cm(H*W*D)	
Material	ABS	
Packing Details	1pc/ctn, 16.4kgs/ctn, 161*41*21cm	
Apply	Supermarket, garment shop, digital shop etc.	
Detction Distance	DUAL RL 4*4:1.4-1.6m T002 mini square:1.6-1.8m T004 large square:1.8-2.0m	MONO RL 4*4:0.7-0.8m T002 mini square:0.8-0.9m T004 large square:0.9-1.0m



RS4003

Dual/Mono

Product Specification

- Easy installation, High performance
- Wide detection range
- Advanced technology with software control which ensures antenna.
- Works stable even in the noise environment.

Frequency	8.2MHz	
Unit Dimension	166*39*4.5cm(H*W*D)	
Material	ABS+Metal	
Packing Details	1pc/ctn, 9kgs/ctn, 171*46*21.5cm	
Apply	Supermarket, garment shop, digital shop etc.	
Detction Distance	DUAL RL 4*4:1.4-1.6m T002 mini square:1.6-1.8m T004 large square:1.8-2.0m	MONO RL 4*4:0.7-0.8m T002 mini square:0.8-0.9m T004 large square:0.9-1.0m



RF SYSTEM

RS5007 (DUAL)

Frequency:8.2MHz
Working Voltage:110V-240V
Working Environment:-20℃-60℃
Unit Dimension:155.8*24*3cm
Material:Aluminium Alloy
Detection Distance:
RF Label:1~1.5m
Small Square Tag:1.6m
Large Square Tag:1.8m
Packing Details:2pcs/ctn,8kgs/ctn,
170*20*42cm




RS4006

Dual

Product Specification

- High quality acrylic, beautiful look and tough structure.
- With small and exquisite shape, saving space.
- Sound-light alarm technology, with stable performance.

Frequency	8.2MHz
Unit Dimension	145*20*10cm(H*W*D)
Material	Acrylic
Packing Details	2pc/ctn,24.0kgs/ctn,160*26*20cm
Apply	Supermarket,garment shop,digital shop etc.
Detction Distance	



RS5007

Dual/Mono

Product Specification

- High quality aluminium alloy, no painting fading.
- With small and exquisite shape, saving space.
- Sound-light alarm technology, with stable performance.

Frequency	8.2MHz								
Unit Dimension	155.8*24*3cm(H*W*D)								
Material	Aluminium Alloy								
Packing Details	2pc/ctn,8.0kgs/ctn,170*20*42cm								
Apply	Supermarket,garment shop,digital shop etc.								
Detction Distance	<table border="0"> <tr> <td>DUAL</td> <td>MONO</td> </tr> <tr> <td>RL 4*4:1.2-1.5m</td> <td>RL 4*4:0.6-0.75m</td> </tr> <tr> <td>T002 mini square:1.4-1.6m</td> <td>T002 mini square:0.7-0.8m</td> </tr> <tr> <td>T004 large square:1.6-1.8m</td> <td>T004 large square:0.8-0.9m</td> </tr> </table>	DUAL	MONO	RL 4*4:1.2-1.5m	RL 4*4:0.6-0.75m	T002 mini square:1.4-1.6m	T002 mini square:0.7-0.8m	T004 large square:1.6-1.8m	T004 large square:0.8-0.9m
DUAL	MONO								
RL 4*4:1.2-1.5m	RL 4*4:0.6-0.75m								
T002 mini square:1.4-1.6m	T002 mini square:0.7-0.8m								
T004 large square:1.6-1.8m	T004 large square:0.8-0.9m								



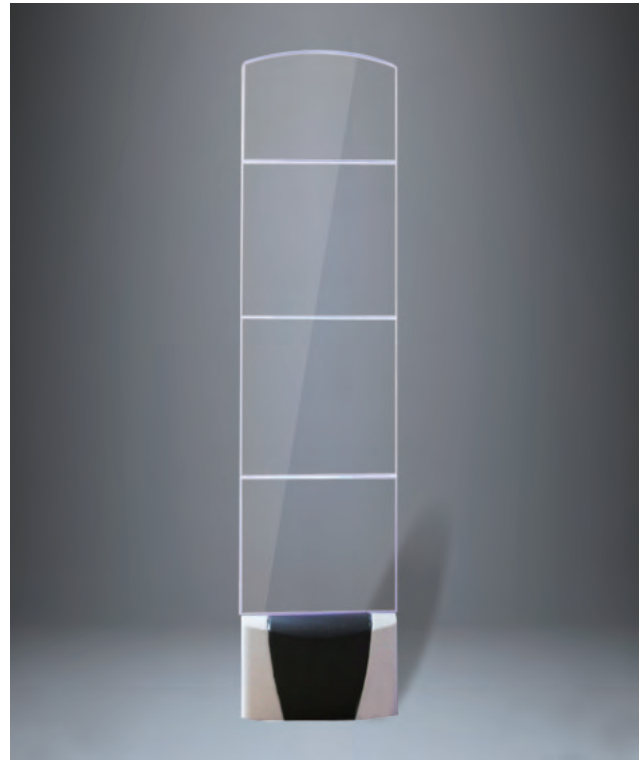
RS5001

Dual/Mono

Product Specification

- Brandnew acrylic material imported from Germany;
- Advanced technology and software control method ensure stable performance of antenna
- Easy installation and operation
- Red and blue leds are available

Frequency	8.2MHz	
Unit Dimension	158*36*2cm(H*W*D)	
Material	Acrylic	
Packing Details	1pc/ctn, 19.5kgs/ctn, 172*47*20cm	
Apply	Supermarket, garment shop, digital shop etc.	
Detction Distance	DUAL RL 4*4:1.4-1.6m T002 mini square:1.6-1.8m T004 large square:≥2.2m	MONO RL 4*4:0.7-0.8m T002 mini square:0.8-0.9m T004 large square:≥1.1m



RS6002

Dual/Mono

Product Specification

- Brandnew acrylic imported from Germany;
- No-blind-zone 3D detecting techniques ensure super high ratio of successful detection of label and tag.
- Super high detecting efficiency. Low misinformation ratio. Reliable mature multichannel online technology.

Frequency	8.2MHz	
Unit Dimension	158*36*2cm(H*W*D)	
Material	Acrylic	
Packing Details	1pc/ctn, 20.0kgs/ctn, 172*42*17cm	
Apply	Supermarket, garment shop, digital shop etc.	
Detction Distance	DUAL RL 4*4:1.4-1.6m T002 mini square:1.6-1.8m T004 large square:≥2.2m	MONO RL 4*4:0.7-0.8m T002 mini square:0.8-0.9m T004 large square:≥1.1m



**WIDE
DETECTION**

RS5008
DUAL/MONO



RS5002

Dual/Mono

Product Specification

- Its material is high-quality aluminum alloy, which makes the antenna durable
- It adopts digital processing technology, so it has stable performance and low false alarm rate

Frequency	8.2MHz	
Unit Dimension	156*40*3cm(H*W*D)	
Material	Aluminum Alloy	
Packing Details	1pc/ctn, 13.0kgs/ctn, 170*49*20cm	
Apply	Supermarket, garment shop, digital shop etc.	
Detction Distance	DUAL RL 4*4:1.2-1.6m T002 mini square:1.6-1.8m T004 large square:≥2.0m	MONO RL 4*4:0.6-0.8m T002 mini square:0.8-0.9m T004 large square:≥1.0m



RS5008

Dual/Mono

Product Specification

- Its material is high-quality aluminum alloy, which makes the antenna durable
- Its alarm distance is particularly wide
- It is widely applicable to supermarket store

Frequency	8.2MHz	
Unit Dimension	167*42*2cm(H*W*D)	
Material	Aluminium Alloy	
Packing Details	2pcs/ctn, 14kgs/ctn, 171*20.5*46cm	
Apply	Supermarket, garment shop, digital shop etc.	
Detction Distance	DUAL RL 4*4:1.4-1.6m T002 mini square:1.6-1.8m T004 large square:≥2.2m	MONO RL 4*4:0.7-0.8m T002 mini square:0.8-0.9m T004 large square:≥1.1m



RS5003

Dual/Mono

Product Specification

- Strong anti-interference capability, low working power
- Stable performance, Wide detection distance
- Easy installation, no additional equipment to adjust

Frequency	8.2MHz	
Unit Dimension	155*36*2cm(H*W*D)	
Material	Aluminum Alloy	
Packing Details	2pc/ctn, 15.0kgs/ctn, 161*42*20cm	
Apply	Supermarket, Clothes store, and other retail stores.	
Detction Distance	DUAL RL 4*4:1.4-1.6m T002 mini square:1.6-1.8m T004 large square:≥2.2m	MONO RL 4*4:0.7-0.8m T002 mini square:0.8-0.9m T004 large square:≥1.1m




RS5004

Dual

Product Specification

- Advanced RF technology, pulse signal work mode, it can save power than the traditional EAS system.
- Simply installation, no need for other equipment to debugging.
- Wireless synchronization

Frequency	8.2MHz	
Unit Dimension	163*22*4.5cm(H*W*D)	
Material	Aluminum Alloy	
Packing Details	2pc/ctn, 18.0kgs/ctn, 173*40*21cm	
Apply	Supermarket, Clothes store, and other retail stores.	
Detction Distance		



RS6003

Dual/Mono

Product Specification

- German imported high quality organic glass; unique alarm lamp and base design, stylish and generous appearance
- High detection efficiency and low false alarm rate
- Specially designed which with Ultra - width detection distance for the high end stores and specialty stores

Frequency	8.2MHz	
Unit Dimension	161*38*2cm(H*W*D)	
Material	Acrylic	
Packing Details	1pc/ctn,24.0kgs/ctn,165*45*15cm	
Apply	Supermarket,garment shop,digital shop etc.	
Detction Distance	DUAL RL 4*4:1.2-1.4m T002 mini square:1.6-1.8m T004 large square:1.8-2.0m	MONO RL 4*4:0.6-0.7m T002 mini square:0.8-0.9m T004 large square:0.9-1.0m



RS6005

Dual/Mono

Product Specification

- Advanced technology and software control method ensure stable performance of antenna
- Easy installation and operation
- Optional red, green and blue LEDs
- Available in mono or dual configuration

Frequency	8.2MHz	
Unit Dimension	151*27*12cm(H*W*D)	
Material	Acrylic	
Packing Details	1pc/ctn,20.0kgs/ctn,172*42*17cm	
Apply	Supermarket,garment shop,digital shop etc.	
Detction Distance	DUAL RL 4*4:1.2-1.4m T002 mini square:1.6-1.8m T004 large square:1.8-2.0m	MONO RL 4*4:0.6-0.7m T002 mini square:0.8-0.9m T004 large square:0.9-1.0m



RD001 RF DEACTIVATOR

Frequency:8.2MHz
 Working Voltage:110V-240V
 Unit Dimension:Decoding Board 24*24*1cm
 Decoder 15*11*3cm
 Decoding Speed:120/min
 Deactivation Height:25cm
 Width Of Sweeping Frequency:7.6MHz-9.0MHz
 Color:Black
 Packing Details:10pcs/ctn,13.5kgs/ctn,48*38*28cm



RD002 RF DEACTIVATOR

Frequency:8.2MHz
 Working Voltage:DC18V
 Unit Dimension:24*24*2.5cm
 Deactivation Height:10-25cm
 Color:Black
 Packing Details:30pcs/ctn,35.0kgs/ctn,76*31*32cm



RD003 RF DEACTIVATOR

Frequency:8.2MHz
 Working Voltage:110V-240V
 Panel size: 29.5*24.5cm
 Built-in size: 27.5*22.5cm
 Deactivating Height: 10~15cm
 Color:Black



RHD001 RF HANDHELD DETECTOR

Frequency:8.2MHz
 Working Voltage:9V
 Unit Dimension:37*8*3cm
 Detection Range:10-15cm
 Color:Black
 Packing Details:1pc/ctn,0.3kg/ctn,39*9*4cm





EM **System**

The electromagnetic system uses electromagnetic radiation as the detection signal. In which the labels used with good price and small size. Can be deactivated/activated and repeatedly. It's very suitable for books, medicines and some special products. Popular in library, bookstores, video stores and so on.



ES001

It passed ISO9001:2008 international quality system certification from 2002 up to now.

Product Specification

- Solid wood and cristal glass combination design, flow linear shape, good transparent effect. And meets the requirement of the Standard of the Disabled Barrier Free Access.
- Applicant for books, pharmacy, cosmetics etc. Blending with surroundings, easy operation, low cost. with ability of anti electronic interference and resistance to aluminium foil block and tinfoil block.

Unit Dimension	148*54*4cm(H*W*D)
Working Voltage	110V-240V
Working Environment	-10°C-40°C
Material	Advanced-Resin-Glass+MDF
Detection	Height:170cm Width:80cm
Packing Details	1set/ctn,34.0kgs/ctn, 151*62*18cm
Controller-Box Packing Details	1set/ctn,6.5kgs/ctn, 43*33*32cm



ES002

It passed ISO9001:2008 international quality system certification from 2002 up to now.

Product Specification

- Solid wood and cristal glass combination design, flow linear shape, good transparent effect. And meets the requirement of the Standard of the Disabled Barrier Free Access.
- Applicant for books, pharmacy, cosmetics etc. Blending with surroundings, easy operation, low cost. with ability of anti electronic interference and resistance to aluminium foil block and tinfoil block.

Unit Dimension	145*62*4cm(H*W*D)
Working Voltage	110V-240V
Working Environment	-10°C-40°C
Material	Advanced-Resin-Glass+MDF
Detection	Height:170cm Width:80-100cm
Packing Details	1set/ctn,36.0kgs/ctn, 150*70*30cm
Controller-Box Packing Details	1set/ctn,6.5kgs/ctn, 43*33*32cm



ES003

It passed ISO9001:2008 international quality system certification from 2002 up to now.

Product Specification

- Adapting FRP material, anti-aging corrosion resistance, durable. And has a precise alarm and high detection rate.
- Can work with people counting, compatible with labels, green energy.
- with ability of anti electronic interference and resistance to aluminium foil block and tinfoil block.

Unit Dimension	152*44*3cm(H*W*D)
Working Voltage	110V-240V
Working Environment	-10°C-40°C
Material	Advanced-Resin-Glass
Detection	Height:170cm Width:80cm
Packing Details	1set/ctn,24.0kgs/ctn,158*50*18cm
Controller-Box Packing Details	1set/ctn,6.5kgs/ctn, 43*33*32cm



ES008

It passed ISO9001:2008 international quality system certification from 2002 up to now.

Product Specification

- Pure acrylic carefully carved, crystal transparent, streamlined, and transparent effect.
- It has a precise alarm and high detection rate.
- Can work with people counting, compatible with labels, green energy
- with ability of anti electronic interference and resistance to aluminium foil block and tinfoil block.

Unit Dimension	150*40*3cm(H*W*D)
Working Voltage	110V-240V
Working Environment	-10°C-40°C
Material	Acrylic
Detection	Height:170cm Width:80-100cm
Packing Details	1set/ctn,37.0kgs/ctn,164*67*13cm
Controller-Box Packing Details	1set/ctn,6.5kgs/ctn, 43*33*32cm

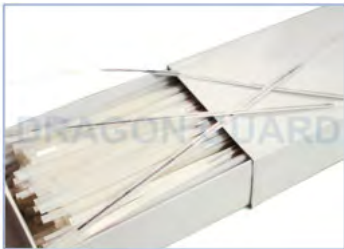


Size:12cm or 16cm
 Material:Cobalt-Based
 Characteristic:Double Side Adhesive
 Deactivable/Non-Deactivable
 Length16cm Packing Details:
 50000pcs/ctn,20.0kgs/ctn,
 41*33*26cm

EL002 EM BOOK LABEL

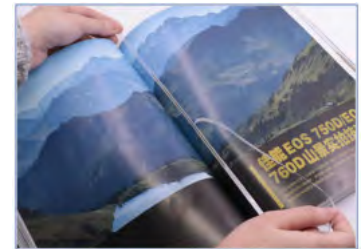


EL002 EM BOOK LABEL



Size:12cm or 16cm
 Material:Cobalt-Based
 Characteristic:Double Side Adhesive
 Deactivable/Non-Deactivable
 Length 12cm Packing Details:
 20000pcs/ctn,10.0kgs/ctn,48*38*17cm
 Length 16cm Packing Details:
 20000pcs/ctn,11.0kgs/ctn,48*38*17cm

EL004 EM BOOK LABEL



EL004 EM BOOK LABEL



Size:1*4/1*5/1*6cm or Customized
 Material:Cobalt-Based
 Characteristic:Single Side Adhesive
 Deactivable/Non-Deactivable
 Packing Details:20000pcs/ctn,5.8kgs/ctn,
 27*22*29cm

EL005 EM LABEL



EL005 EM LABEL



Size:11.4cm Dia'
 Strip Size:10cm
 Material:Cobalt-Based
 Characteristic:Single Side Adhesive
 Deactivable/Non-Deactivable
 Packing Details:4000pcs/ctn,9.0kgs/ctn,
 48*25*14cm

EL008 EM CD LABEL



EL008 EM CD LABEL



**ED002
ACTIVATOR/DEACTIVATOR**

Unit Dimension:27*23*10cm
 Working Voltage:110V-240V
 Deactivation Height:≤10cm
 Packing Details:1pc/ctn,8.0kgs/ctn,35*29*18cm



**ED004
ACTIVATOR/DEACTIVATOR/DETECTOR**

Unit Dimension:34*22*9cm
 Working Voltage:110V-240V
 Detection Height:≤2cm
 Deactivation Height:≤5cm
 Packing Details:1pc/ctn,10.0kgs/ctn,41*33*18cm





✉ sales@dragon-guard.com

☎ +86-516-61886636

🌐 www.dragon-guard.com